

COLORADO STATE UNIV.

AIR FORCE

OCTOBER 23, 1971

HUGHES STADIUM

OFFICIAL PROGRAM 75 cents

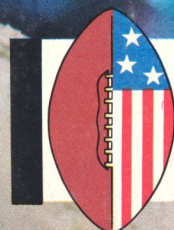
Claude Anderson



**THE
COLLEGE
GAME** ®



COLORADO STATE UNIV.



**THE
COLLEGE
GAME** ®



AIR FORCE

OCTOBER 23, 1971

HUGHES STADIUM

OFFICIAL PROGRAM 75 cents

THE POLYNESIAN PUB.



CONTINENTAL AIRLINES' NEW COACH LOUNGE. IT'S TERRIFIC!

We believe it's people that make a party. And so we designed our new Coach lounge with people in mind. It's not your formal kind of room. It's just the opposite. Very relaxed. What we've done is set up a friendly bar. Stocked up with plenty of drinks and snacks. And then invited lots of congenial people

including you. Because it's really you... and your friends... and the new people you meet... that make our Polynesian Pub parties so terrific. All the way to Chicago, Los Angeles and Honolulu. For all the good things of flight, call your travel agent for reservations. Or call Continental Airlines at 398-3000.

 **CONTINENTAL AIRLINES 747**

THE ONLY 747s WITH 2 LOUNGES AND A PUB.



RAM FOOTBALL ILLUSTRATED



CONTENTS

Official Welcome	2
Today's Game	3
Rams' Scouting Report	4
Colorado State University	5
Head Coach Jerry Wampfler	6
CSU Coaching Staff	7-8
President A. R. Chamberlain	9
Athletic Director Perry Moore	10
CSU Players	11-17
CSU Athletic Administration	18
Penalties	20
Signals	21
Western Athletic Conference	22
CSU Marching Band	23
CSU Roster	25
Feature	26
Lineups	29
Feature	31
Opponents Roster	32
Gold Club	35
CSU Pepperetts	36
Hughes Stadium Seating Plan	37
CSU Cheerleaders	38
Football & Coaches	39
Football Records	40
CSU Training Staff	41
1971 Ram Opponent's Schedules	42
Beef Club	43
Ram Boosters	44
All-Time Scoreboard	46-51
Ram Basketball	52
Know The Foe	53-56

RAM FOOTBALL ILLUSTRATED

Riley Hall Editor
 Keichi Nakamoto Photos
 Jack Pierson Photos
 Robinson-Warfield Printing

Published by the Colorado State University Athletic Department
 Represented by Spencer Advertising Company Nationally

Scoring
 for
 You
 in
 Modern
 Living!

ELECTRIC
 GAS
 SERVICE



PUBLIC SERVICE
 COMPANY
 OF
 COLORADO

TAKE OUT
 ORDERS

746 N. College
 482-3145

PIZZA,
 ITALIAN DINNERS,
 SALADS,
 SANDWICHES,
 3.2 BEER

*Happy are the people who partake
 of the succulent fare at Pizza Roma!*

Delight Your Taste Now

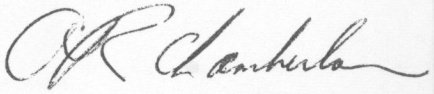


WELCOME TO RAM LAND

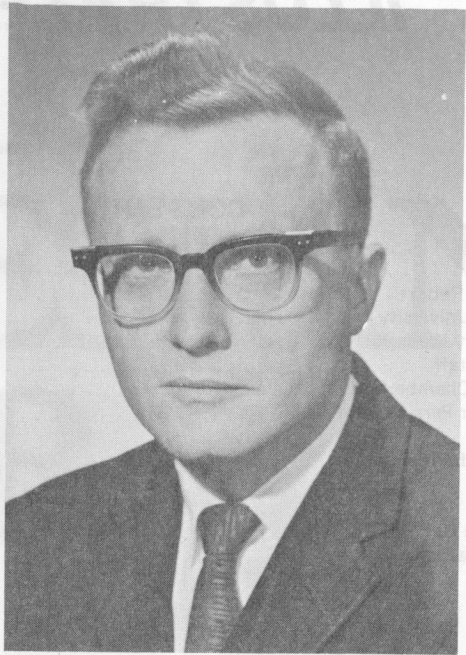
Welcome to Hughes Stadium and the traditional rivalry between CSU and Air Force. I am particularly pleased to extend greetings to the Corps of Cadets and the members of the Academy staff, including Superintendent A. P. Clark, Lieutenant General, US Air Force.

Today has been designated Legislative Appreciation Day and we are proud to have several members of the Colorado General Assembly as our guests.

I hope that those of you who are guests in Fort Collins today will take this opportunity to visit CSU's main campus and the fine community of Fort Collins.



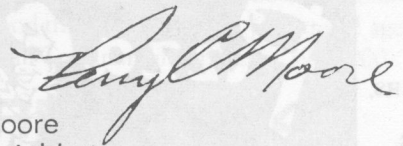
Dr. A. R. Chamberlain
President of Colorado State University



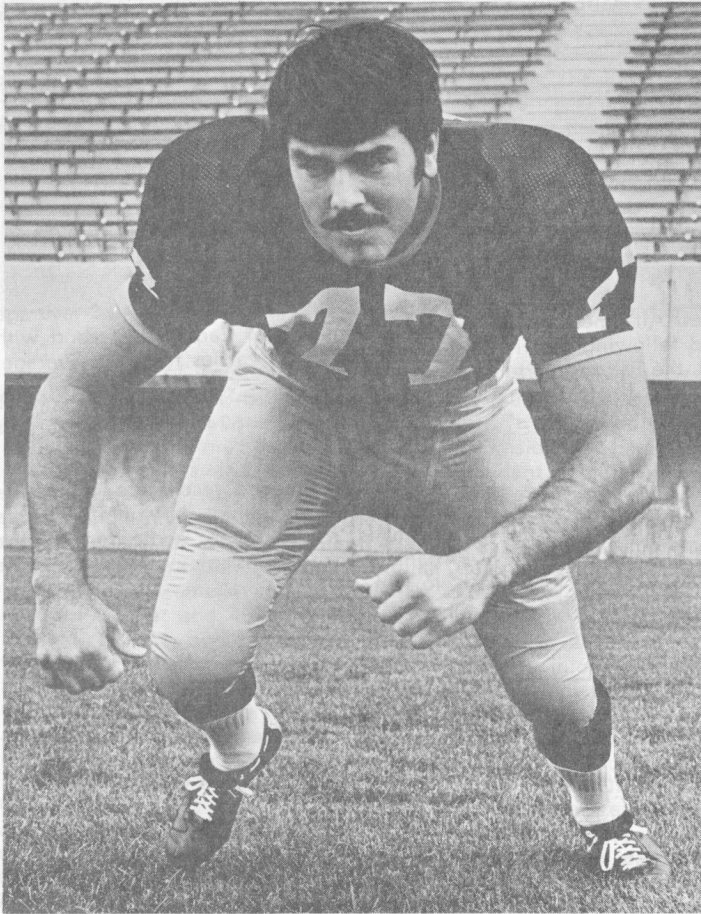
As is our annual custom, we again today have the honor of dedicating a C.S.U. football game to the legislators of our state. Many of these men and their wives are with us today. We are all the beneficiaries of the labors of these public-spirited citizens.

It is likewise a great pleasure to welcome our fine opponents of the day, our local rivals from the United States Air Force Academy. Colorado is indeed fortunate to have been selected as the site of one of our three national service academies.

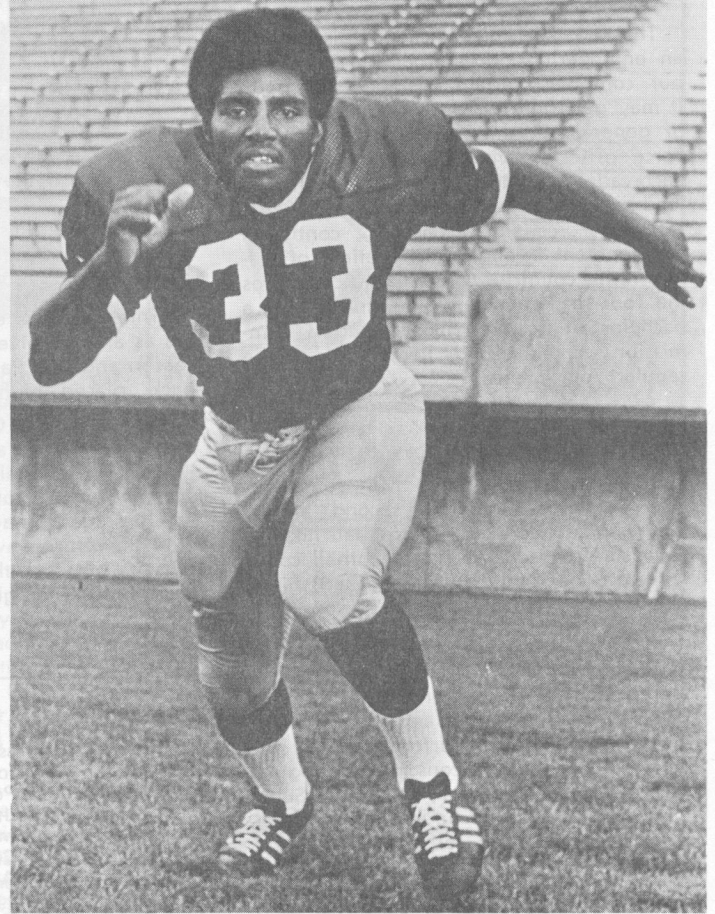
And finally, a special welcome to you, the football fans of our great state.



Perry C. Moore
Director of Athletics



Bill Johanningmeier
Defensive End



Larry Tarver
Fullback

Air Force Academy Here Today to Renew Modern Rivalry

Colorado State and Air Force haven't played many games in the 72 years of CSU football—12 to be exact—but it wasn't because they didn't want to. It's only because the Academy didn't come into being until July 11, 1955.

Since that time the Rams and Falcons have tied up in all sports from water polo to football to soccer. And football has taken the center stage with the largest crowd ever here in Hughes Stadium for the 1968 game when over 29,000 filled the new facility to

see another typical hard fought AFA-CSU battle. The Rams drew 41,300 for the 1962 version of the affair.

But today is another time around. CSU is currently 0-5 on the season while the Air Force is 4-1 and trying for their fourth winning season under coach Ben Martin this year. The Cadets have an impressive record with a 7-6 win over Missouri and victories of 23-19 over Wyoming, 30-0 over SMU and last week's 21-7 conquest of Army. But the Falcons were stopped at Penn State by a narrow 16-14 score.

The Rams, meanwhile, have found the going tough. Coach Jerry Wampf-

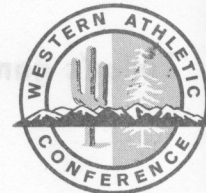
ler has pulled out all the stops in trying to come up with the winning combination but so far the Rams have only knocked on the door of victory.

The Rams now stand 0-4 in Western Athletic Conference play after five weeks of the season have passed. Coach Wampfler is hopeful a win will come the Rams way in the near future—like today!

Air Force has won nine of the 11 games played between the two schools with one ending in a tie. The last victory for the Rams came in 1966 with a 41-21 score.



Rams' Scouting Report



AIR FORCE ACADEMY:

The U.S. Air Force Academy is neither an engineering nor a liberal arts college but combines certain elements of both. It may generally be described as a school of general education for professional Air Force officers—which endeavors to give each cadet the knowledge and qualities of leadership required of an officer of the U.S. Air Force and a basis for continued development throughout a lifetime of service to his country. A cadet who completes the four-year course will graduate with a bachelor of science degree and a commission as a second lieutenant in the regular Air Force.

COACH BEN MARTIN:

Coach Martin is in his 14th season at the Air Force Academy, second longest tenure in service academy football history. Only service academy head football coach with a longer tenure was Earl (Red) Blaik, who coached at Army for 18 seasons.

Martin's 13th season at Air Force in 1970 turned out to be one of the best. He took a team that was not highly regarded when the season started and turned in one of the top coaching performances in the nation, guiding the Falcons to a 9-2 regular season record and a spot in the 1971 Sugar Bowl, the third time he has led the Falcons to a postseason contest.

Martin is one of the most qualified men in the nation to coach at a service academy. He attended a service academy himself, graduating with honors from the Naval Academy with the class of 1946. As a football player, he earned All-Amer-

ica mention as an end and halfback. He also lettered three years in track.

LAST SEASON:

The Falcons finished with a 9-3 record and spot in the Sugar Bowl against Tennessee where they lost to the nationally ranked Vols, 34-13. The Cadets had two big upset victories to send them on their way with wins of 37-14 over Missouri and 31-14 over Stanford.

Ernie Jennings earned All-America honors as an offensive end following the fine season and Bob Parker, the Falcon quarterback, placed high in the final national passing statistics.

CURRENTLY:

Air Force came into the 1971 season with 25 returning lettermen, same as last season, but lost the top passer, the top pass receiver, a good portion of the de-

fensive backfield and both starting offensive tackles.



But those losses haven't seemed to bother the Falcons as they have now won four while losing only one and it was a narrow 16-14 defeat to Penn State at University Park, Pa. The four wins came over Missouri (7-6), Wyoming (23-19), SMU (30-0) and Army (21-7).

Brian Bream, the big tailback, is currently leading the Falcon rushers with 334 yards on 111 carries for a 3.0 average while flanker Joel Carlson is second with 197 yards on 34 carries for a 5.8 average.

Quarterback Rich Haynie has hit on 41 of 103 passes for 624 yards and has four TD's to his credit.

The statistics and record are impressive but the biggest thing about an Air Force team is its complete dedication to the game. The Falcons play hard and come to win.

1971 Schedule		1970 Results (9-3)	
Sept. 18	—Missouri, 7-6	45	Idaho 7
Sept. 25	—Wyoming, 23,19	41	Wyoming 17
Oct. 2	—at Penn State, 14-16	37	Missouri 14
Oct. 9	—Southern Methodist, 30-0	37	Colorado State 22
Oct. 16	—Army, 21-7	24	Tulane 3
Oct. 23	—at Colorado State	26	Navy 3
Oct. 30	—at Arizona State	35	Boston College 10
Nov. 6	—Oregon	23	Arizona 20
Nov. 13	—at Tulsa	35	Oregon 46
Nov. 20	—at Colorado	31	Stanford 14
		19	Colorado 49
		13	Tennessee 34





COMPLETE LINE OF CAMERAS, BINOCULARS AND EQUIPMENT

Sony Tape Recorders

1737 S. College 484-3686

INSURANCE — BONDS — HOME LOANS




L. C. Wilson Agency

Dan Wilson Agent *GO, RAMS, GO!*

125 W. Mountain Phone 482-6151

BeeLine Service

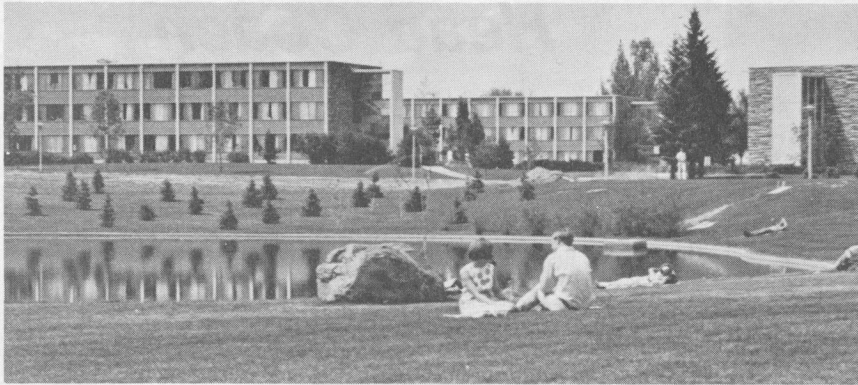


wheel aligning
wheel balancing
wheel straightening
frame straightening

"SERVING FORT COLLINS FOR 20 YEARS"

142 Remington • Merle D. Hall • W. G. Woodard • Phone 482-6691

Colorado State University



The heart of Colorado State University is its 500-acre main campus in Fort Collins. With some 17,500 students and more than 1,000 faculty and professional staff, the campus is almost a city within itself. It has more than 100 buildings, including classrooms, laboratories, library, residence halls, sports facilities, cafeterias, theaters and assembly halls, a student center with bowling alleys, lounges, meeting rooms, ballrooms, and a bookstore, and the offices of the faculty and University administration. It also has its own security force and its own infirmary. It is a year-around campus, too, with a comprehensive program in the summer session offering a regular quarter of academic work.

The main campus at Fort Collins is 5,000 feet above sea level, 65 miles north of Denver and 45 miles south of Cheyenne, Wyoming. The city is served by two rail and two bus lines. Interstate 25, U.S. 287, and Colorado 14 are the main highways. An hour's drive will take you into the heart of the Rockies to such recreation areas as Estes Park and Rocky Mountain National Park. Fort Collins is noted for clear, bright days with dry, relatively dust-free air. Average annual precipitation is 14.77 inches. Quarterly temperature means are 26.1 for January, 46.1 for April, 69.4 for July, and 48.6 for October.

Some of CSU's students also become familiar with its other two campuses. One is the Foothills Research Campus, a 1600-acre area west of the main campus at the edge of the foothills to the Rockies. Many of the research facilities in agriculture, engineering, forestry, and veterinary medicine are on this Foothills Campus, and some undergraduates and many graduate students become involved in research projects in these areas. Forty-five miles west of the main campus, well into the Front Range of the Rocky Mountains, is the Pingree Park campus. This is primarily a summer campus for field instruction in forestry and natural resources, biological science, and civil engineering. These three campuses are supplemented by eleven research stations in all parts of the state.

All three campuses contribute to a varied and vital educational program at Colorado State University.

CSU also operates programs in several foreign countries adding to the experience of the faculty who teach on the main campus. Thus CSU is not only a Colorado land-grant university but also an international university.



After The Game (or before)

Come to King's Food Host
for the BEST in eating pleasure.

330 S. College, Fort Collins
Ph. — 484-1472 for takeout orders.



Jerry Wampfler

Head Coach

One look at Jerry Wampfler and you know he's a veteran of many gridiron wars. Heavy set, muscular and eyes of steel tell you right away that he knows what the game is about.

He arrived on the CSU campus in January, 1970, and the renewed interest in CSU football became apparent from that moment on. His practice sessions have drawn large crowds. When he speaks, the people listen and his players know what the "man" wants.

The 39-year-old native of Ohio was one of the most outstanding high school coaches ever in Ohio before moving on to college coaching positions at Miami of Ohio and Notre Dame.

Involved in only one losing season in 24 years of playing and coaching prior to coming to CSU, Wampfler joined the Rams from Notre Dame where he served four years as the offensive line coach.

During his stay with the "Fighting Irish", Wampfler helped guide the team to a national championship in 1966, when the Irish finished third nationally in total offense.

Notre Dame placed fifth nationally in 1967 and seventh in offense; eighth in the nation in 1968 and second in offense and completed a very successful season in 1969 with an eighth place position in the final wire service polls.

The new Ram boss is in constant demand as a lecturer at coaching clinics and universities throughout the country and spends a great deal of time during the winter months on the banquet circuit.

Wampfler doesn't make any predictions on the won-loss record he and his staff will be able to maintain at CSU but does say his teams will be fundamentally sound, abreast of the latest strategy and will represent CSU by playing with a full heart.

Wampfler graduated from New Philadelphia Ohio High School in 1950 and played football four years from 1947 to 1950.

He moved on to Miami University of Ohio in 1950 where he played football for four years—1950-1954. While there Wampfler played under Woody Hayes one year and Ara Parseghian three years. He was an All-Ohio and All-Mid-America Conference tackle in 1953.

He received his B.S. Degree in Education at Miami of Ohio in 1954 and later earned his master's degree in Education at Xavier University of Cincinnati, Ohio.

Wampfler returned to his home town and began his coaching career at New Philadelphia High School in Ohio in 1954 where he served one year as assistant football, basketball and head track coach. He moved the next season to Presbyterian College in Clinton, S. C., where he was the offensive and defensive line coach and head baseball coach.

He took over the defensive coaching position at Lancaster Ohio High School in 1956 and his defensive troops held the 10 opponents to only six touchdowns.

Wampfler received his first head coaching position at Massillon, Ohio, High School in 1957 and remained there until 1962.

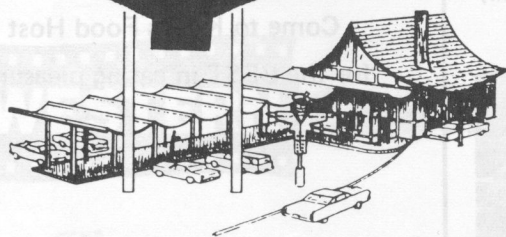
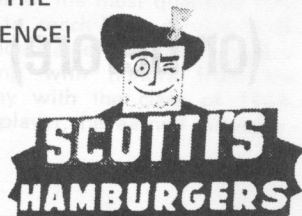
He returned to Lancaster in 1962 and guided his team to an 8-1-1 record and was the Central Ohio League's Coach of the Year.

In 1963 he returned to his Alma Mater, Miami of Ohio, where he worked as the offensive coordinator under present Michigan coach Bo Schembechler. During his three seasons in that position, their teams finished second in the Middle America Conference in 1963 and 1964 and took first place in 1965.

That led him to Notre Dame in 1966, where he remained until his appointment to Colorado State University. He coached seven All-Americans, George Kunz, Tom McKinley, Jim Reilly, Paul Seiler, George Goddeke, Ernie Kellerman, and Larry Di Nardo.

He and his wife Carol are the parents of three children, Nan 13, Jody 11 and Tad 9.

THE MENU
MAKES THE
DIFFERENCE!



Stop In
After
the
Game

HUGE HOT HAM SANDWICH

PIZZA BURGER

BIG SCOTCHMAN HAMBURGER

¼ lb. beef on a 4½" seed bun
lettuce, tomato and Thousand Island

825 South Shields

Coaching Staff



Front Row: (l to r)—Chick Harris, Offensive Ends; Jerry Wampfler, Head Coach; Fred Conti, Defensive Secondary. Back Row: (l to r)—Joe Cribari, Assistant Coach; Paul Schudel, Offensive Line; Wayne Chapman, Linebackers; Don Drury, Defensive Line; Andy MacDonald, Offensive Backs.

ANDY MacDONALD

OFFENSIVE COORDINATOR

Andy was the first new coach to be hired by Jerry Wampfler and came to CSU from the University of Tulsa where he served as No. 1 assistant to Coach Vince Carillot.

Andy will be mainly responsible for the offensive backs and is also the coordinator of the offensive unit. He was backfield coach at Northern High School in Flint, Mich., in 1952 and 1953 and took over the head job in 1954. He retained that duty until 1960. His teams won state titles in 1956 and 1960.

In 1961, Andy moved to the University of Iowa where he served as an assistant coach until 1964. He moved to Northern Arizona as head coach from 1965 through 1968. From Northern Arizona he went to Tulsa.

He is a former letterwinner in baseball, football and basketball at Northern High in Flint and earned All-Conference honors in football. He moved to Central Michigan where he earned All-America recognition as a quarterback and was voted most valuable player in his junior and senior years.

Andy and his wife, Dolly, are the parents of three daughters, Laurie, Pattie and Anne.

PAUL SCHUDEL

OFFENSIVE LINE COACH

Paul came to Colorado State from the University of New Hampshire where he served for two seasons as offensive line coach.

Prior to his tour of duty at New Hampshire, Paul served as a graduate assistant coach at Miami University of Ohio under Bo Schembecler.

Paul attended Swanton High School in Ohio and was a four

year letterwinner in football, three years in basketball, three years in track and one year in baseball. He graduated from Swanton in 1962 and moved on to Miami University where he played three seasons on the offensive line. During his stay he earned honorable mention All-Conference honors and honorable mention Academic All-America. He received his B.S. degree from Miami of Ohio in 1966 and earned his masters degree in Education in 1968.

Paul and his wife, Mary, have one daughter, Jennifer.

CHICK HARRIS

OFFENSIVE END COACH

Chick came to CSU in July, 1970 and his responsibilities include coaching the offensive ends and working as a counselor for the athletic department.

Chick comes to Colorado State from Northern Arizona University where he worked with the defensive secondary and the offensive backfield. He also served as a scout.

Chick attended Long Beach Polytechnical High School in California from 1959 through 1963. He earned All-City and All-League honors at the offensive halfback and defensive cornerback slots. He was the top scorer for the Long Beach High School in 1962.

He entered Long Beach City College and sat out the 1963 season. Competed in 1964-65 and saw action as a defensive halfback and offensive tailback. Transferred to the University of Northern Arizona in 1966 and sat out his first season. In 1967 and 1968, Chick played as an offensive halfback and in the defensive backfield and was voted most inspirational athlete in 1967 and team captain in 1968.

He and his wife Cheryl have no children.

FRED CONTI

DEFENSIVE COORDINATOR

Fred joined the Rams in January of 1971 after serving as defensive secondary coach at Wichita State University.

Prior to the Wichita job, which he accepted in February of 1969, Fred served nine years at Niles McKinley High School in Niles, Ohio, where he helped guide the team to an 80-11-7 record and an unbeaten streak of 48 games. He had earlier served as graduate assistant in charge of the freshman program at Northwestern University under head coach Ara Parseghian.

He lettered three years at Sharon High School in Sharon, Pa., before being recruited to Northwestern by Lou Saban, now coach of the Denver Broncos. Saban was later replaced by Parseghian and Fred played two years under Ara before suffering a severe knee injury that curbed his participation in football.

He and his wife Rose are the parents of a son, Joseph, and a daughter, Mary Rose.

WAYNE CHAPMAN

LINEBACKER COACH

Wayne is the newest addition to the Ram grid staff as he joined the Rams in May of 1971 after three years as defensive coordinator at Morehead State in Kentucky.

He began his coaching career at Auburndale High School in Auburndale, Fla., as an assistant coach from 1960 through 1963. He took over the head coaching duties in 1964 and retained that title until moving to Morehead State in 1968.

His high school teams won their conference championship twice and were in the state playoffs three seasons where they finished third twice and second once.

Wayne lettered two years in football and basketball at Barboursville, West Virginia, High School. He later starred four years at Morehead State as an offensive and defensive tackle.

He and his wife Hildreth are the parents of four children: Kevin, Carla, Jill and Daren.

DON DRURY

DEFENSIVE LINE COACH

Don moved up to the varsity staff this season after a highly successful 3-1 season as head coach of the Ram Freshman team in 1970.

Don began his coaching career at Prospect Valley High School in Keenesburg, Colo., in 1960 as head football and baseball coach. In 1961 he moved to Crowley County High School in Ordway, Colo., as head football coach before joining his Alma Mater, Colorado College, as defensive coach. There he remained until 1965 when he took over the head job at Aurora, Colo., Central High School. His 1967 and 1968 teams at Aurora Central were ranked in the state's Top 10.

He lettered in four sports for four years at LaVeta, Colo., High School before moving on to Colorado College in Colorado Springs where he also won four letters for football participation.

He and his wife Georgiana are the parents of two sons, Ike and Abe, and one daughter, Dawn.

JOE CRIBARI

ASSISTANT COACH

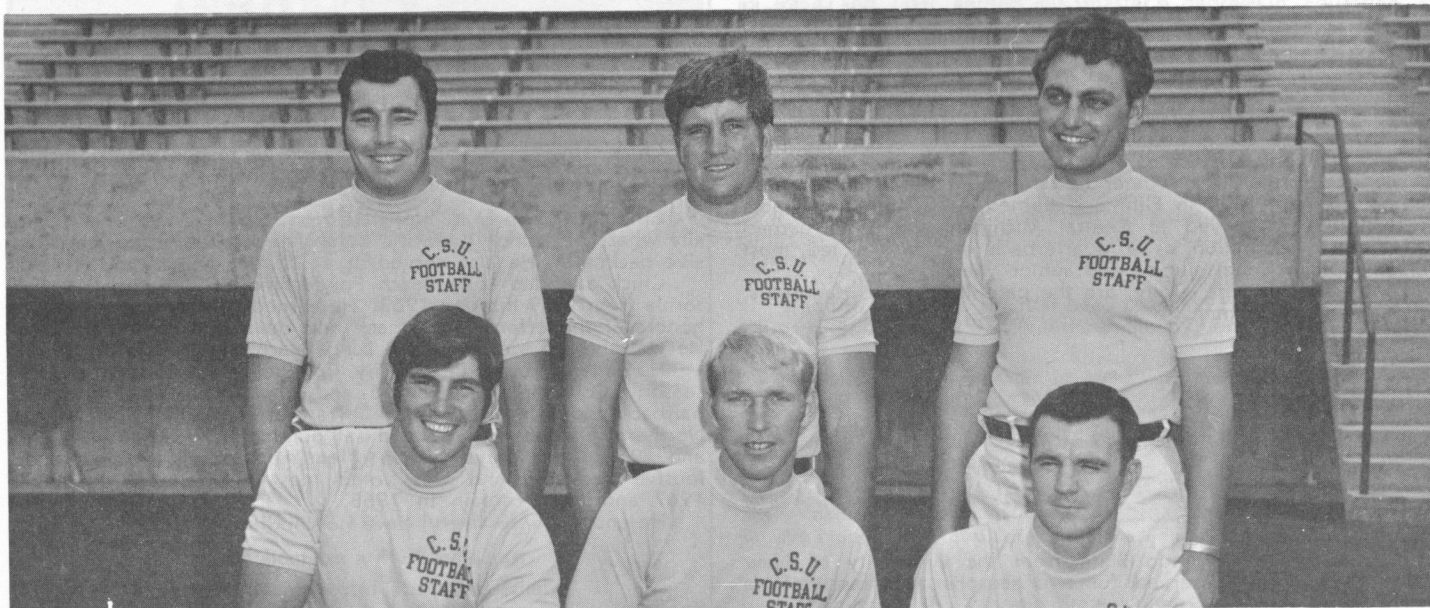
Joe is the veteran of the Ram staff as he came to Colorado State in 1957. During his 15 years of service to the CSU football program, Joe has worked as head freshman coach, end coach and defensive backfield coach.

Under the new staff, Joe has been assigned the duty of scouting and working with the scout team. He started his coaching career at Kearney, Neb., High School in 1952 where he served as head football coach and assistant basketball coach. He then moved to Trinidad Junior College in 1955 and moved to CSU in 1957.

Joe's playing career began to bloom at Salida High School where he earned All-Conference honors three years and All-State honors twice. He attended the University of Denver and played center. He was chosen as a member of the All-Skyline Conference teams in 1942, 1947 and 1948. In his final year he earned a berth on the International News Service All-America squad.

Joe and his wife, Glenna, have a son, Chris, and a daughter, Kim.

Freshmen Coaching Staff

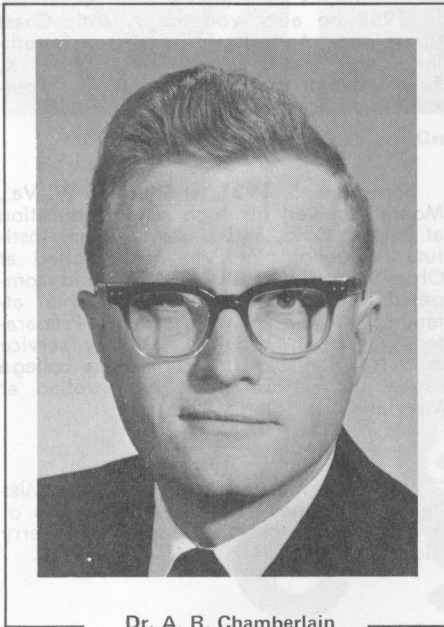


Front Row (l-r) — Mike Ackerley, Dick Stecklein, John Hancock. Back Row (l-r) — Bill Pietrosky, Tim Monty, Jerry Brumit, Head Coach.

825 South Shields

Dr. A. R. Chamberlain—

President of Colorado State University



Dr. A. R. Chamberlain

Dr. Chamberlain makes it a point to back the Rams in many of their athletic encounters and official functions. He attends nearly all home games and usually travels with the team to one away-from-home football game each year.

"I am proud of Colorado State University's membership in the Western Athletic Conference and the bright future ahead for our overall athletic and physical education program," Dr. Chamberlain said.

"The growth of our athletic program is consistent with those of the other member institutions in the WAC. I am pleased with the new Hughes Stadium and our outstanding Auditorium-Gymnasium."

Chamberlain, was born in Detroit, Michigan, on November 11, 1929, and was graduated from Benzonia High School near Traverse City, Michigan in 1947.

He attended Michigan State University from 1947 to 1951 and majored in engineering. He then attended Washington

State University and received his M.S. degree before coming to CSU in 1952.

He received a doctor's degree in engineering in 1955 from CSU. In 1955 and 1956 he attended the University of Grenoble in France on a Fulbright Grant.

In 1956 Chamberlain became associate professor of civil engineering and civil engineering research coordinator. From the associate professorship, he advanced to the position of executive vice president in 1966.

He became a professor and chief of civil engineering research in 1957 and became acting engineering dean in 1959 and in 1969 vice president for administration and professor of civil engineering.

He was elected by the Jaycees as one of the Outstanding Young Men in Colorado in 1961. He is a member of numerous fraternal and honorary societies.

Dr. Chamberlain and his wife, Virginia, are the parents of three children, Curtis, Tracy and Tac.

GO RAMS!



Fort Collins
Independent Druggists

Shop at Home . . .

Where Your Money Stays at Home!



GO RAMS!

Batson Drug

804 SOUTH COLLEGE

482-4406

Bob's Lemay Pharmacy

1025 LEMAY

482-2413

City Drug

101 SOUTH COLLEGE

482-1234

Doctors Medical Center Rexall Pharmacy

1217 EAST ELIZABETH

484-2777

Northern Pharmacy

180 NORTH COLLEGE

482-1035

Poudre Rexall Pharmacy

424 SOUTH COLLEGE

484-3666

Prospector Drug

111 WEST PROSPECT

484-8748

Campus Drug

1101 WEST ELIZABETH

484-3611

Perry C. Moore—Director of Athletics

Colorado State University's athletic fortunes are guided by a former outstanding athlete and a man who has had experience in all phases of the world of intercollegiate athletics. Perry C. Moore was appointed athletic director at CSU July 1, 1968 and has been selling the CSU program in the state of Colorado and across the nation in a tireless effort to promote CSU to national prominence.

Moore is firmly dedicated to the importance of intercollegiate athletics in today's university system and he strives constantly to maintain a close interchange between the intercollegiate department programs and personnel and the other departments and personnel which make up today's university.

A believer in helping his fellow universities, Moore served as national chairman for the Wichita Fund following the tragic air crash in the Colorado mountains which claimed the lives of 13 members of the staff and players of the Wichita State University football team on its way to Logan, Utah, in the fall of 1970.

An athletic administrator at eastern and southeastern universities for 10 years, Moore came to CSU from the University of Florida, where, since 1964, he had served as assistant to the director of athletics, Ray Graves.

He joined the Florida staff in 1961 as assistant basketball coach and concessions manager and the following year he was given an additional appointment as administrative assistant to the athletic director.

Moore graduated from the University of Maryland in 1958 after receiving a B.S. degree with first honors in physical education, recreation and health. He was selected for "Who's Who Among Students in American Universities and Colleges," in 1958 and then appointed assistant basketball coach and assistant to the business manager at his Alma Mater.

At Maryland, Moore was a versatile athlete as he participated three years in basketball and track and he competed in the National Amateur Athletic Union decathlon and track and field championships and in the 1956 Olympic Games decathlon trials.

Moore is one of only four athletes to receive the Bill Guckeyson Trophy at Maryland. This award is given by the university to honor the exceptional student who shows outstanding character plus leadership qualities in athletics and academics. In 1958 he also won the Atlantic Coast Conference Award of Excellency in athletics and academics and the Herbert K. Evans Memorial Award as the most outstanding trackman.

Born Nov. 5, 1931, at Sherman W. Va., Moore received his high school education at Belpre, Ohio, and Linsley Military Institute, Wheeling, W. Va. He enrolled at Ohio State University in 1950 and competed in freshman football. He then attended the U.S. Naval Academy Preparatory School in 1951-52. Military service as a Navy airman interrupted his college career until 1954 when he enrolled at Maryland.

Moore is married to the former Miss Peggy Jo Stone. They are the parents of a daughter, Pamela Jo, and a son, Perry Clay, Jr.



RESTAURANT AND LOUNGE

*The Ultimate In Fine Dining
Cocktails of Course*

Dial 482-4234 For Reservations

1002 N. College Ave. Fort Collins

Peterson-Anderson Tires, Inc.

Seiberling Tires — Dunlap Tires

Texaco Products

Used Tires — Retreading

125 E. Oak

Phone 482-2752



Hart Schaffner & Marx and Curlee Clothes

210 South College

MASTERCARGE

For The Guys

- BASS
- CLARKS
- BATES
- PUMA
- DUNHAM
- AND MANY, MANY MORE

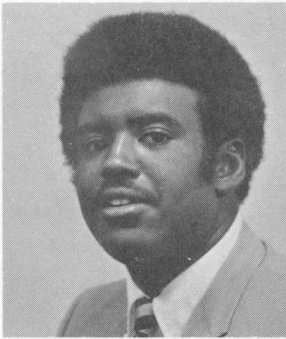
Brown's SHOE FIT COMPANY

The Leading Shoe Store
In The Rocky Mountain Area

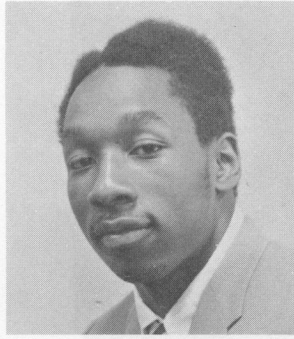
BANKAMERICARD

For The Gals

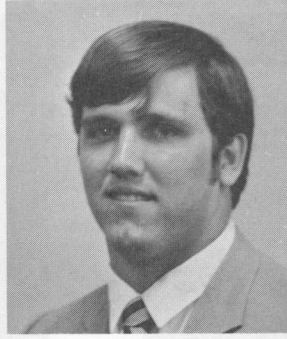
- BASS
- SBICCA
- NINA
- MOXEE
- DUNHAM
- HICKING BOOTS



Ed Bailey



Greg Battle



Ken Behrens

Major Motor Supply, Inc.

Complete Line Auto Parts
And Speed Equipment

Modern Machine Shop



CSU



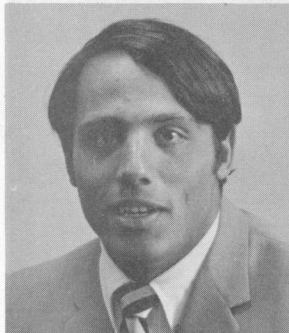
TWO CONVENIENT
LOCATIONS
TO SERVE YOU

NORTH

256 LINDEN
482-8031

SOUTH

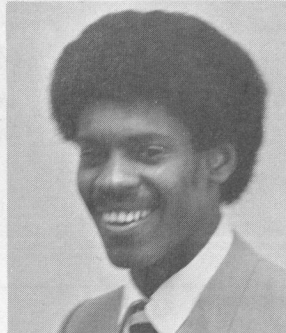
111 W. PROSPECT
484-3460



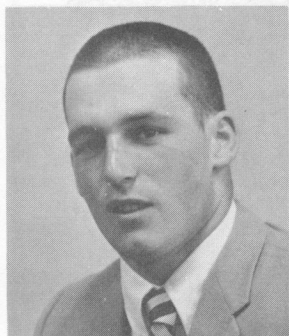
Doug Bitteto



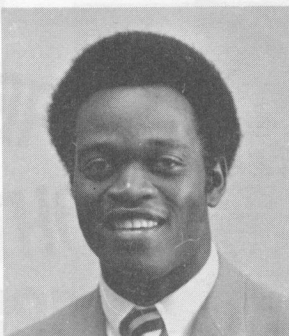
Rod Blackford



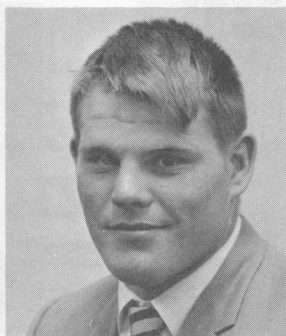
Jim Brown



48 John Bullen

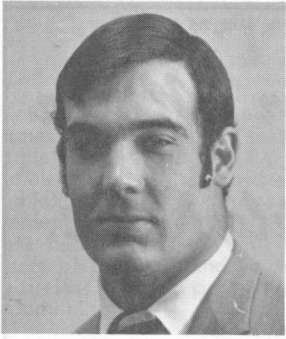


Wayne Burris

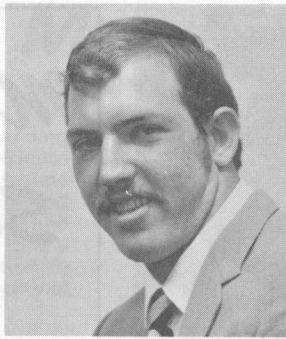


Dave Campbell

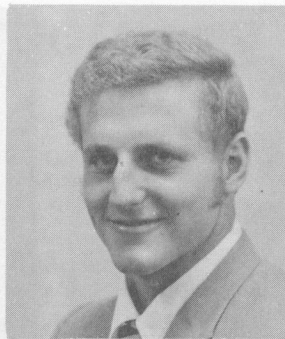




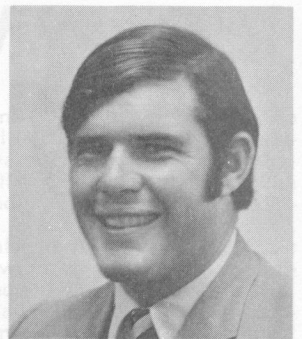
Gerald Caswell



Richard Charno



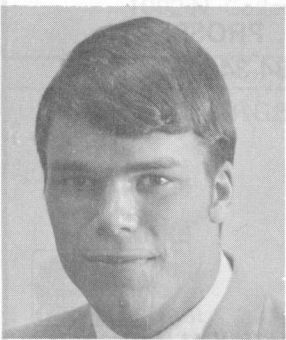
Wes Cerveny



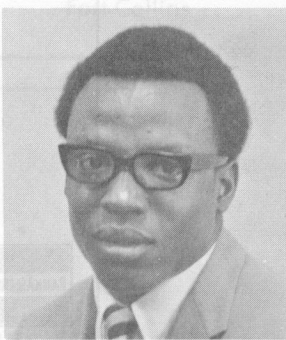
Tim Darton



CSU Administration Building



Paul Duda



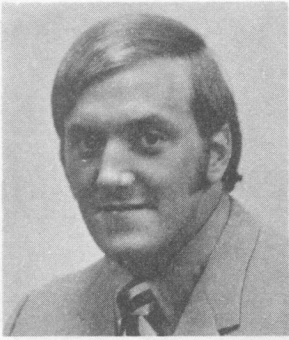
Bill Duncan



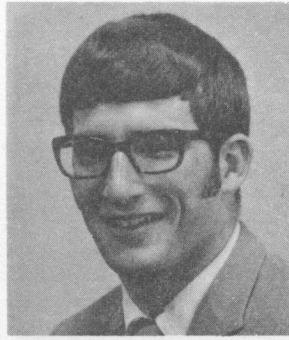
Steve Endres



Jim Erickson



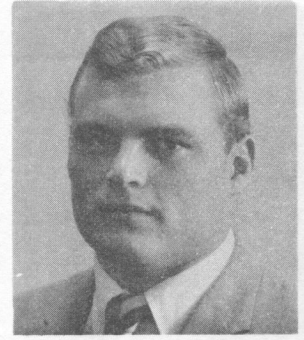
Mike Fenech



Joe Gall



Jake Green



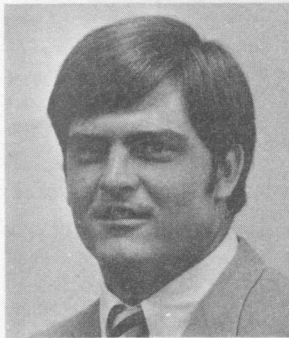
Greg Hargis



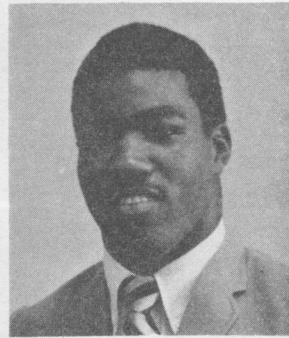
Dennie Harms



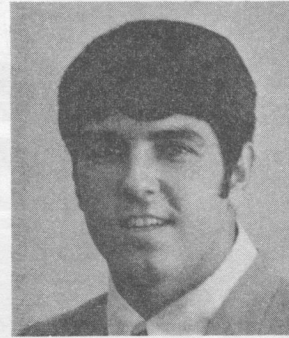
Ted Hill



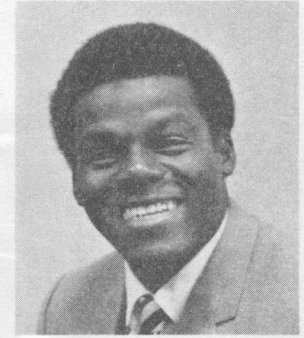
Jim Hillier



Charles Jackson



Bill Johanningmeier



Steve Jones



**AFTER
THE
Game!**

for take-out
orders
phone
484-3124

at SHAKEY'S

**WE SERVE FUN
ALSO PIZZA!**


1 **SHAKEY'S** PIZZA PARLORS & $\frac{1}{2}$ Public houses **1**

\$1.00 OFF the regular price of any family Pizza, coupon redeemable at any SHAKEY'S Pizza Parlor in:
METRO DENVER, BOULDER FT. COLLINS, GREELEY, COLORADO SPRINGS OR PUEBLO.

CSU

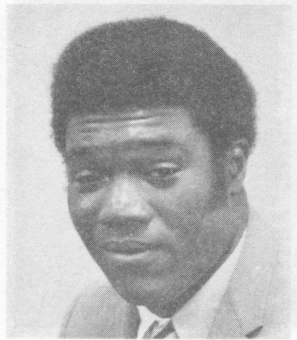
1 **LIMIT ONE COUPON PER FAMILY PER VISIT** **ONE DOLLAR** **1**

expires Dec. 1971





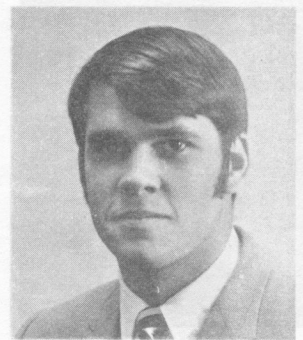
Paul Johnson



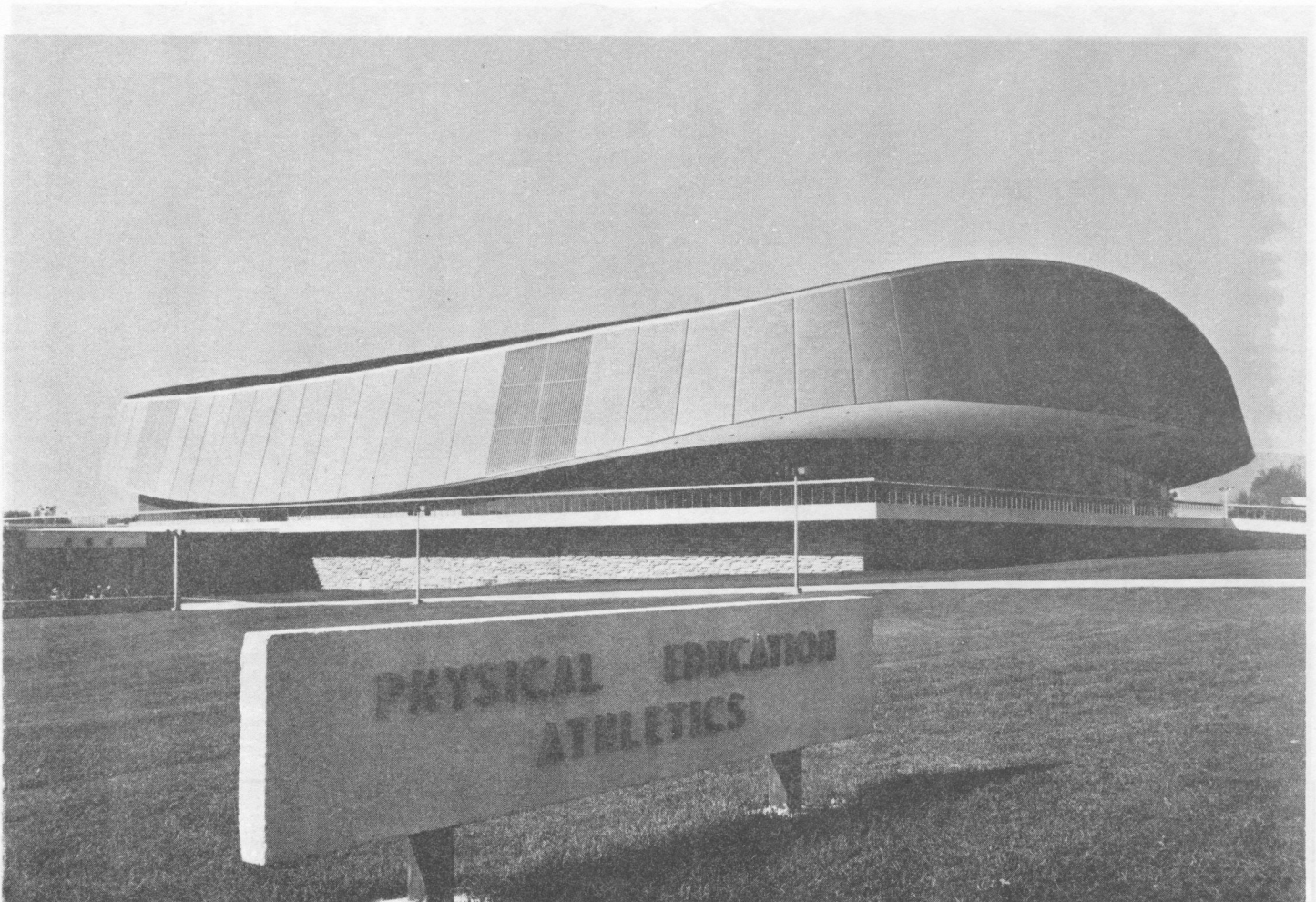
Jim Kennedy



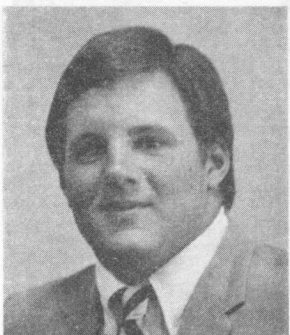
Rudy Kifus



Terry Kirk



CSU Auditorium-Gymnasium



Greg Kuhn



Andy Lang



Joe Lasse



Reggie Leonard



Lawrence McCutcheon



Don McGatlin



Tim McGee



John Murray



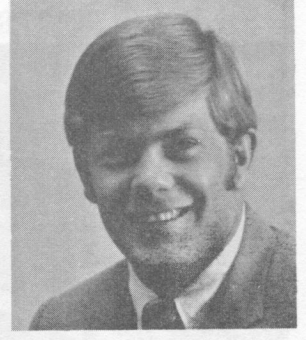
Bruce Nenadal



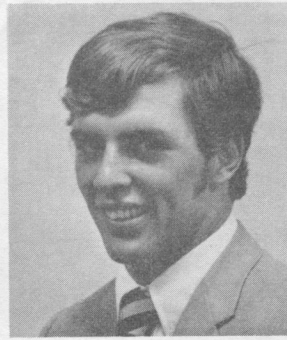
Bill Nogue



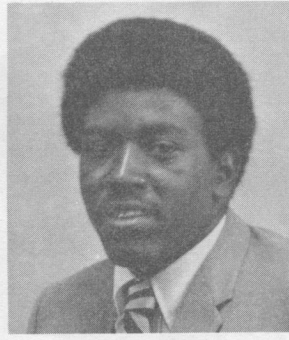
Les Olson



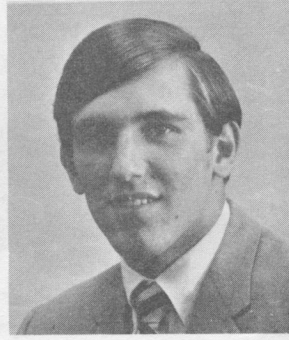
Terry Olsen



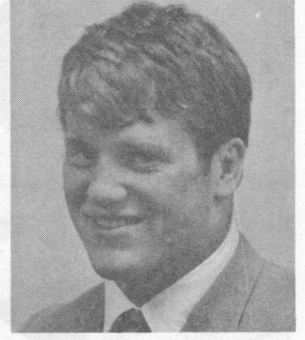
Mike Ottombrino



Manson Petty



Ron Polasek



Rick Rohwer

"THE BEST OF ALL POSSIBLE BANKS"

UNIVERSITY NATIONAL BANK

2101 So. College



Member FDIC

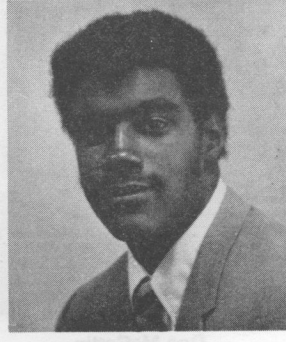
YOUR BANKAMERICARD BANK



Dan Ruzek



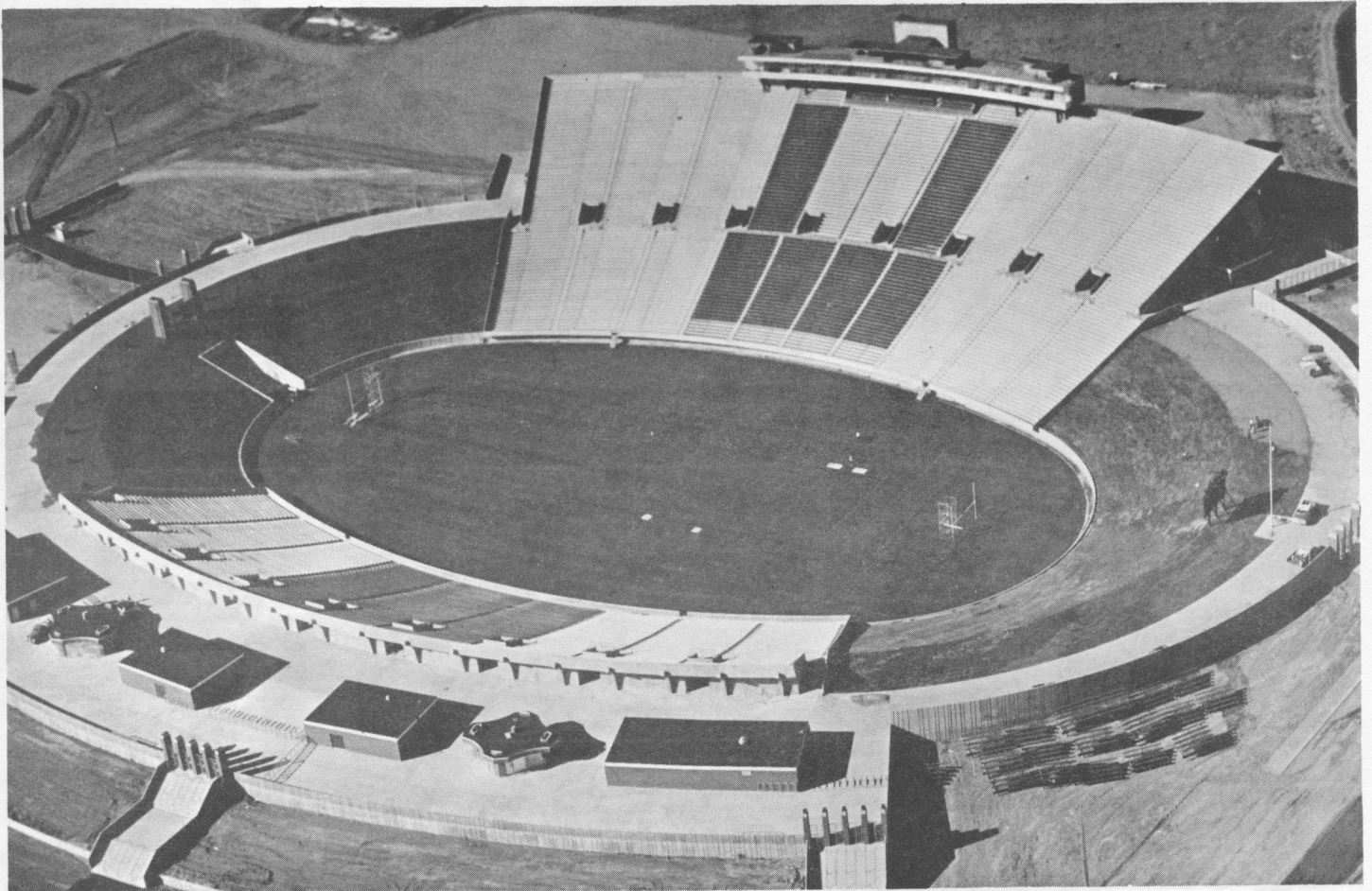
Scott Simmons



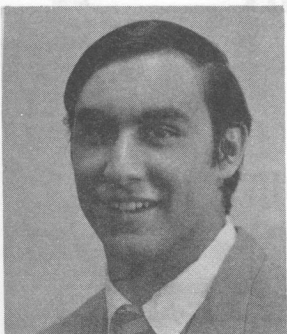
Perry Smith



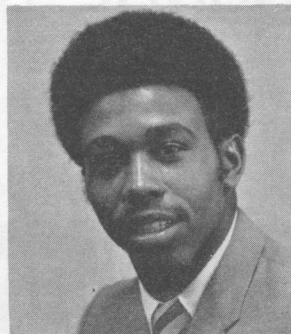
Ron Sondrup



Hughes Stadium



Steve St. Clair



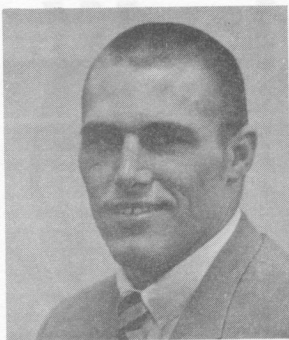
Greg Stemrick



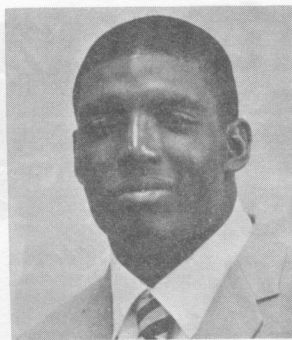
Tom Stockham



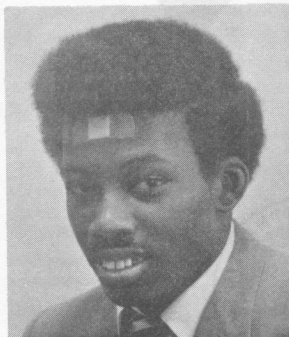
Tom Stolarz



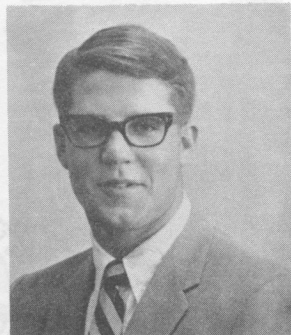
Bruce Fahrni



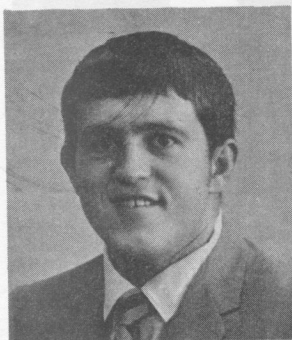
Larry Tarver



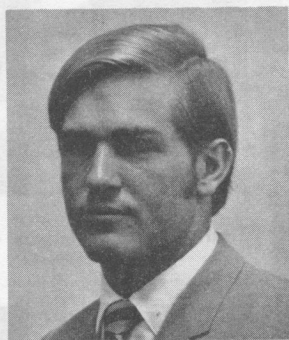
Darryl Thompson



Bruce Torgerson



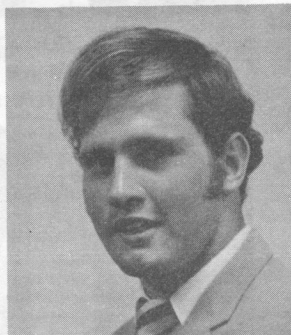
Gary Vernon



Jim Votaw



Tom Wallace



Steve Zediker

Looking For Top-Notch Sports Entertainment?

SEE THE CSU RAMS
IN ACTION '71

Looking For A Top-Notch New Car?

SEE ONE OF YOUR FORT COLLINS
FRANCHISED AUTO DEALERS:

German Car Sales

FIAT - SAAB - BMW

3241 S. College

Dick's Datsun

Datsun

3841 S. College

Northern Colorado Equipment Co.

International Trucks

E. of Fort Collins

Dreiling Motors

Buick - Pontiac - GMC Trucks

230 So. College

College Motors

Rambler - Jeep

331 No. College

Ghent Motor Co.

Ford - Lincoln - Mercury

2601 So. College

Markley Motors, Inc.

Dodge - Plymouth - Imperial

Chrysler

246 No. College

Dellenbach Chevrolet

Chevrolet

303 No. College

Ed Carroll Volkswagen

Authorized Volkswagen

Dealer

3003 So. College

Colorado Import Motors Ltd.

Volvo - MG - Austin-Healey

1113 No. College



Perry Moore

CSU Athletic Administration



Jack O'Leary



Ed Beeks

Administrative Staff

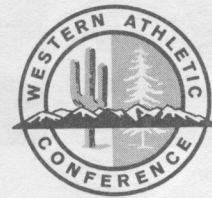
President	Dr. A. R. Chamberlain (Mich. St., 1951)
Director of Athletics	Perry C. Moore (Maryland, 1958)
Assistant Athletic Director	Jack O'Leary (Colo. College, 1959)
Assistant Athletic Director	Ed Beeks (Chicago, 1934)
Faculty Athletic Representative	Dr. Harry Troxell (Duke, 1943)
Athletic Business Manager	Jim Martell
Athletic Ticket Manager	Dean Bressler (Army, 1944)
Accountant and Concessions Manager	Russ Schroeder (CU, 1957)
Team Physician	Dr. Robert Morrell (CU, 1944)
Trainer	Clint Thompson (Texas, 1964)
Equipment Manager	Paul Dees
Director of Physical Services	Jim Lien (Iowa State, 1937)
Grounds Supervisor	John Fisher
Sports Information Director	Riley Hall, (UTEP, 1966)

Football Staff

Head Football Coach	Jerry Wampfler (Miami, O., 1954)
Defensive Line	Don Drury (Colo. College, 1960)
Offensive Backfield	Andy MacDonald (Central Mich., 1953)
Defensive Backfield	Fred Conti (Northwestern, 1959)
Offensive Line	Paul Schudel (Miami, O., 1966)
Linebackers	Wayne Chapman (Morehead St., 1960)
Offensive Ends	Chick Harris (N. Arizona, 1968)
Assistant Coach	Joe Cribari (Denver, 1950)
Head Freshman Coach	Jerry Brumit (Simpson College, 1965)
Freshman Offensive Line	Tim Monty (Notre Dame, 1968)
Freshman Receivers	Bill Pietrosky (CSU, 1970)
Freshman Defensive Backs	Dick Stecklein (SCSC, 1967)
Freshman Defensive Coordinator	Mike Ackerley (CSU, 1970)
Freshman Defensive Line	John Hancock (W.S.C., 1963)

Coaches of Other Sports

Head Basketball	Jim Williams (Utah State, 1947)
Assistant Basketball	Boyd "Tiny" Grant (CSU, 1957)
Wrestling	Don "Tuffy" Mullison (CSU, 1949)
Swimming	Art Solow (E. Mich., 1949)
Gymnastics	Steve Johnson (Mich. St., 1963)
Track and Cross Country	Del Hessel (CSU, 1964)
Baseball	Irv Ferguson (CSU, 1946)
Director of Intramurals	B. C. "Bo" Cowel (Nebraska St., 1934)



Harry Troxell



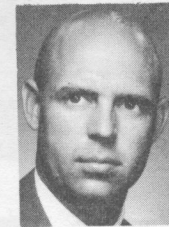
Jim Martell



Riley Hall



Dean Bressler



Clint Thompson



Paul Dees



Jim Lien



John Fisher



Russ Schroeder

We give you the only thing better than a full-service bank: the full-service banker.



A good bank is loaded with useful, helpful, profitable services for you and your money. If you know how to take advantage of them, and who to see about what.


Here at the United Bank, we've made all those services a lot easier to use. We put them all together for you in the hands of one banker. Your own personal banker.

He's an expert on all the good things we can do for you. And what's even better, he gets to be an expert on *you* and your special needs.

Want to get a workable savings pro-

gram going? He'll show you how. Need a home improvement loan? He can okay it on the spot. Advice on setting up a trust? Help with budget planning? Expert counsel on how to pay for a car? He's your man, no matter what.

Personal banking: it's a welcome change from the other kind. Even if you have to change banks to get it. (Your personal banker can handle that for you too.)

 **United Bank of Ft. Collins**

In times like these, it's nice having your own personal banker.



United Bank of Ft. Collins. 401 S. College Ave. Phone: 482-1100. National Association. Member FDIC.

Penalties

1. OFFSIDE by either team; Violation of scrimmage or free kick formation; Encroachment on neutral zone – **Loss of Five Yards.**
2. ILLEGAL PROCEDURE, POSITION OR SUBSTITUTION – Putting ball in play before Referee signals "Ready-for-Play"; Failure to complete substitution before play starts; Player out-of-bounds when scrimmage begins, or on free kick formation; Failure to maintain proper alignment of offensive team when ball is snapped; False start or simulating start of a play; Taking more than two steps after Fair Catch is made; Player on line receiving snap; Free kick out-of-bounds – **Loss of Five Yards.**
3. ILLEGAL MOTION – Offensive player illegally in motion when ball is snapped – **Loss of Five Yards.**
4. ILLEGAL SHIFT – Failure to pause one full second in shift play – **Loss of Five Yards**
5. ILLEGAL RETURN – Infraction of substitution rule – **Loss of Five Yards.**
6. DELAY OF GAME – Consuming more than 25 seconds in putting the ball in play after it is declared ready-for-play; Failure to remove injured player for whom excess timeout was granted; Crawling – **Loss of Five Yards.** Team not ready to play at start of either half – **Loss of 15 Yards.**
7. PERSONAL FOUL – Tackling or blocking defensive player who has made fair catch; Piling on; Hurdling; Tripping; Grasping face mask of opponent; Tackling player out-of-bounds, or running into player obviously out of play; **Loss of 15 Yards.** (Flagrant offenders will be disqualified.)
8. CLIPPING – **Loss of 15 Yards.**
9. ROUGHING THE KICKER or holder – **Loss of 15 Yards.**
10. UNSPORTSMANLIKE CONDUCT – Striking an opponent with fist, forearm, elbow or locked hands; Kicking or kneeling – **Loss of 15 Yards** (offenders will be disqualified); Violation of rules during intermission; illegal return of disqualified player; Coaching from side lines; Invalid signal for Fair Catch; Persons illegally on field – **Loss of 15 Yards.** (Flagrant offenders will be disqualified.)
11. ILLEGAL USE OF HANDS AND ARMS by offensive or defensive player – **Loss of 15 Yards.**
12. INTENTIONAL GROUNDING of forward pass – **Loss of Five Yards from spot of pass Plus Loss of Down.**
13. ILLEGAL FORWARD PASS OR ILLEGALLY HANDING BALL FORWARD – **Loss of Five Yards from spot of foul Plus Loss of Down.**
14. FORWARD PASS OR KICK CATCHING INTERFERENCE – Interference with opportunity of player of receiving team to catch a kick – **Loss of 15 Yards.** Interference by member of offensive team on forward pass – **Loss of 15 Yards Plus Loss of Down.** Interference by defensive team on forward pass – **Passing Team's Ball at Spot of Foul and First Down.**
15. INELIGIBLE RECEIVER DOWNFIELD ON PASS – **Loss of 15 Yards.**
16. BALL ILLEGALLY TOUCHED, KICKED OR BATTED – Forward pass being touched by ineligible receiver beyond the line of scrimmage – **Loss of 15 Yards from Spot of Preceding Down and Loss of a Down.** Eligible pass receiver going out-of-bounds and later touching a forward pass – **Loss of Down;** illegally kicking the ball – **Loss of 15 Yards;** illegally kicking or batting a free ball – **Offended team's ball at Spot of Foul.**
17. INCOMPLETE FORWARD PASS – Penalty declined; No play or no score.
18. HELPING THE RUNNER, or interlocked interference – **Loss of 5 Yards.**



ITALIAN RESTAURANT
and
3.2 LOUNGE

484-5563

Closed Monday

GIUSEPPE'S
THE Ram's Inn

482-1551

354 WALNUT

CAMPUS WEST SHOPPING CENTER

Closed Tuesday

RESTAURANT
and
3.2 LOUNGE



Official's Signals

<p>1</p> <p>Offside (Infraction of scrimmage or free kick formation)</p>	<p>2</p> <p>Illegal Procedure or Position</p>	<p>3</p> <p>Illegal Motion</p>	<p>4</p> <p>Illegal Shift</p>	<p>15</p> <p>Ineligible Receiver Down Field on Pass</p>	<p>16</p> <p>Ball Illegally Touched, Kicked, or Batted</p>	<p>17</p> <p>Incomplete Forward Pass, Penalty Declined, No Play, or No Score</p>
<p>5</p> <p>Substitution Infractions</p>	<p>6</p> <p>Delay of Game</p>	<p>7</p> <p>Personal Foul</p>	<p>18</p> <p>Helping the Runner or Interlocked Interference</p>	<p>19</p> <p>Ball Dead; if Hand is Moved from Side to Side: Touchback</p>	<p>20</p> <p>Touchdown or Field Goal</p>	<p>21</p> <p>Safety</p>
<p>8</p> <p>Clipping</p>	<p>9</p> <p>Roughing the Kicker</p>	<p>10</p> <p>Non-contact Fouls</p>	<p>22</p> <p>Time out; Referee's Discretionary or Excess Time Out followed with tapping hands on chest.</p>	<p>23</p> <p>First Down</p>	<p>24</p> <p>Ball Ready for Play</p>	
<p>11</p> <p>Illegal use of Hands and Arms</p>	<p>12</p> <p>Intentional Grounding</p>	<p>13</p> <p>Illegally Passing or Handing Ball Forward</p>	<p>14</p> <p>Forward Pass or Kick Catching Interference</p>	<p>25</p> <p>Start the Clock</p>	<p>26</p> <p>Loss of Down</p>	<p>27</p> <p>Player Disqualified</p>

JULIAN'S

Since 1924

"Where Style-Conscious Coeds Shop with Confidence"

CHARGE ACCOUNTS WELCOME

137 S. College Ave.

Phone 482-1263

Lowest Meat Prices in Fort Collins

THRIFTY FOODS

1100 W. Mountain

1205 W. Elizabeth

Headlee's Central



Standard Service

Gas — Oil

Tires

Auto Accessories

Batteries

602 So. College

NOW'S THE TIME TO WINTERIZE YOUR CAR

Phone 482-0764

Western Athletic Conference

UNIVERSITY OF ARIZONA. . . . Located in Tucson, one of the fastest-growing areas of the Southwest. . . Enrollment is 25,000. . . Arizona Stadium seats 40,000 for football and Bear Down Gym 3,600 for basketball with a new gym to be completed by the 1973-74 season seating 15,000.

ARIZONA STATE UNIVERSITY. . . . Located in Tempe, an integral part of the vast Phoenix metropolitan complex. . . 30,000 enrollment. . . Sun Devil Stadium holds 51,000 for football. . . The Sun Devil Gym seats 5,000 for basketball with a new gym to seat 15,000 on the drawing boards.

BRIGHAM YOUNG UNIVERSITY. . . . Located in Provo, Utah, 44 miles southwest of Salt Lake City. . . Enrollment is approximately 25,000. . . Cougar Stadium seats 30,892 for football. . . Activities Center seats 22,000 for basketball.

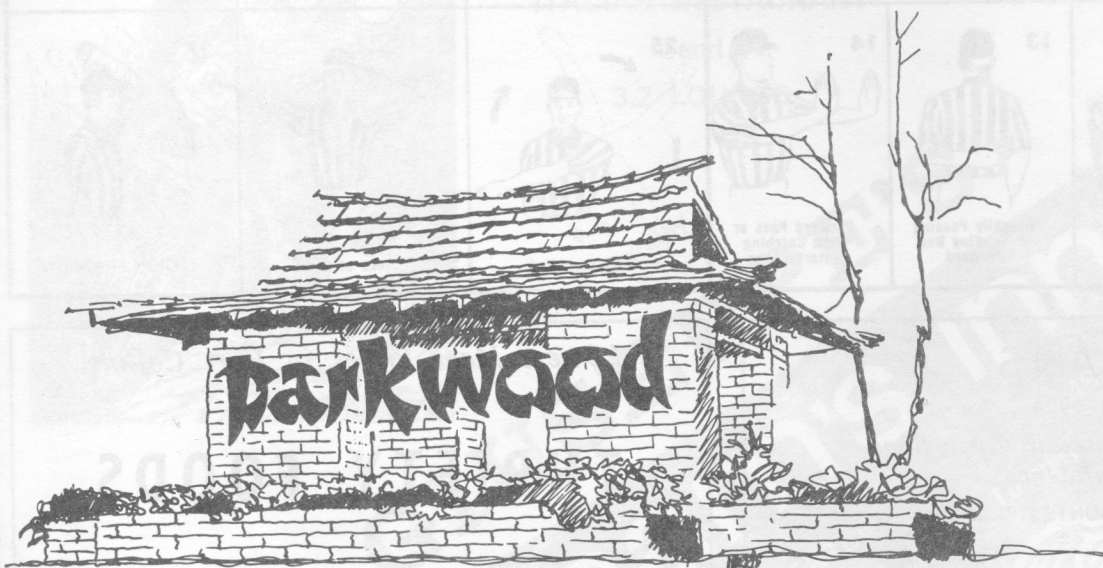
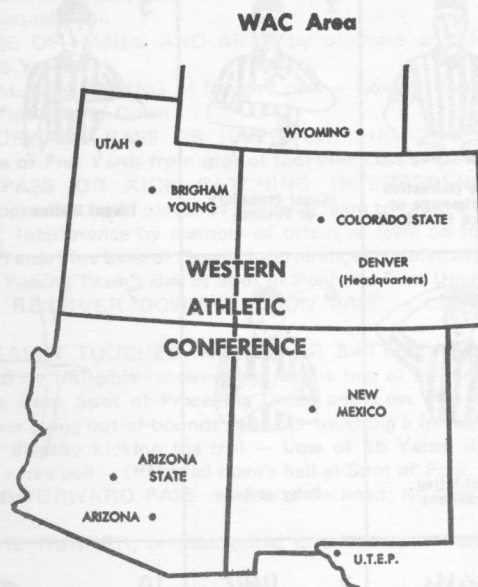
COLORADO STATE UNIVERSITY. . . . Located in Fort Collins, 66 miles north of Denver, the largest population center in the Rockies. . . Enrollment is 17,500. . . Hughes Stadium seats 30,000 for football and CSU Auditorium's capacity for basketball is 10,000.

UNIVERSITY OF NEW MEXICO. . . . Located in Albuquerque, the population hub of New Mexico. . . Enrollment is 18,000. . . University Stadium capacity for football is 30,000. . . University Arena seats 14,831 for basketball.

UNIVERSITY OF TEXAS AT EL PASO. . . . Located in El Paso. . . Enrollment approximately 11,000. . . Sun Bowl Stadium seats 30,000 for football and County Coliseum houses 8,200 for basketball.

UNIVERSITY OF UTAH. . . . Located in Salt Lake City. . . Enrollment is approximately 23,000. . . Ute Stadium's capacity for football is 30,000. . . The Utah Special Events Center seats 15,000 for basketball.

UNIVERSITY OF WYOMING. . . . Located in Laramie, 66 miles north of Fort Collins and 130 miles north of Denver. . . Enrollment is approximately 8,400. . . Memorial Stadium holds 27,000 for football. . . Memorial Fieldhouse seats 11,000 for basketball.



PARKWOOD IS QUALITY LIVING

Parkwood is Fort Collins' quality residential area. A blend of natural landscaping and careful planning, home owners in the development enjoy spacious green areas, a large lake, clubhouse, swimming pool, tennis courts, two saunas and a nearby golf course. New trees join existing mature shade trees in the acres of public green area. Nothing has been overlooked. See Parkwood, the natural residential park of Fort Collins.

Joe Carter

Phone 484-7313

Gary Haxton

CSU Marching Band

Colorado State University's band program has long been one of the school's greatest sources of pride and the Ram marching band is certainly no exception to the rule.

The Rams marching band is well known to followers of the Colorado State University football team as the CSU musicians perform at every Ram home game.

The band is composed of 150 members who receive one hour of credit for participation. All majors and colleges on the campus are represented in the band and the right to participate is done completely on a voluntary basis.

Heading up the Ram band is director Otto Werner, a veteran band director who has been at Colorado State University since 1961. Before coming to CSU eight years ago, Werner served in the Colorado and Illinois public school systems. He is a graduate of Western Illinois University and also teaches in the CSU Department of Music.

Werner explains that each home game halftime program is built around one central theme. "We usually attempt to keep current with music that is happening or we try to keep up with current events," Werner said.

Yearly, the band will perform with the CSU "Golden Girl" during the halftime ceremonies. This year's "Golden Girl" will be Carol Greve.



Carol Greve

GOLD BOND STAMPS **DRIVE-UP WINDOW**

PARAMONT
LAUNDRY and DRY CLEANERS
Clean 'Em Up, Rams!

300 E. Mountain Phone 482-6483

FORT COLLINS
1st
INDUSTRIAL BANK

NOW ENJOY... **5 3/4 %** PASSBOOK SAVINGS

"GOOD PLACE TO SAVE...A GOOD PLACE TO BORROW"

3 Year Certificate 650 So. College

 **robinson / warfield company**

printers and lithographers

 **robinson / warfield company**

218 west mountain, fort collins, colorado 80521

Here it is Ram Fans:
Your smart play...
a bank account at the First!

You come out of the huddle with...
 (that's your business!)

You get your Back End in motion on a sweep to the First.

You deftly take a checking accounts form as you whiz past the New Accounts Dept.

You fill it out on a Bootleg.

You swerve nimbly through the Installment Loan Dept. and latch on to your Master Charge Card.

You zig-zag through lobby traffic to the Safe Deposit Dept. and safe deposit your valuables.

You lateral a savings deposit to a high interest savings plan at the First... a leading ground-gainer.

And bingo, you've hit paydirt!

For more play-by-play action, watch "The Jerry Wampler Show" on Channel 7, KLZ-TV, each Sunday at 10:35 pm. Sponsored by the First!

This play brought to you by



**FIRST
 NATIONAL
 BANK**

The winning team

CSU ROSTER

No.	Name	Pos.	Ht.	Wt.	Cl.	Age	Exp.	Hometown
3	Spronk, Bruce	K	6-0	196	Jr.	21	—	Denver, Colo.
5	Blackford, Rod	P	5-11	190	So.	20	FL	Fort Collins, Colo.
7	Hainlen, Norman	K	6-3	190	So.	19	Fr.	Denver, Colorado
8	Erickson, Jim	QB	6-1	190	Sr.	22	Sq.	Salinas, California
9	Simmons, Scott	QB	6-0	185	Sr.	23	RS	Phoenix, Arizona
10	Hill, Ted	P	6-1	192	Sr.	21	2	Grand Junction, Colo.
11	Ottombrino, Mike	QB	6-2	190	Jr.	21	Tr.	San Diego, Calif.
12	Smith, Perry	S	6-1	190	Jr.	20	Tr.	Froggy Bottom, S. C.
14	Polasek, Ron	QB	6-0	175	Jr.	21	Sq.	Victoria, Texas
15	Votaw, Jim	S	6-2	190	So.	19	FL	Santa Ana, Calif.
19	Brown, Jim	DB	6-1	187	Jr.	20	Tr.	Altadena, California
20	Stemrick, Greg	SE	6-0	165	So.	20	FL	Cincinnati, Ohio
22	Jones, Steve	HB	5-9	170	So.	19	FL	Pontiac, Michigan
23	Burris, Wayne	CB	6-2	195	Sr.	21	1	Bakersfield, Calif.
24	Harms, Dennie	S	6-2	180	Sr.	21	Sq.	Springtown, Texas
25	Stockham, Tom	FS	6-1	185	Sr.	22	1	Littleton, Colo.
26	Duncan, Bill	CB	6-0	190	So.	20	FL	Omaha, Nebraska
27	Ruzek, Dan	CB	6-0	190	Sr.	21	1	Austin, Minnesota
28	Leonard, Reggie	HB	6-1	187	So.	20	FL	Cincinnati, Ohio
30	McCutcheon, Lawrence	HB	6-1	205	Sr.	22	2	Plainview, Texas
33	Tarver, Larry	FB	5-10	200	Sr.	22	1	Bakersfield, Calif.
34	Zediker, Steve	TE	6-3	205	So.	18	FL	Sioux City, Iowa
35	Bullen, John	HB	5-10	189	Jr.	19	Tr.	Palatine, Illinois
36	Wallace, Tom	FB	6-3	205	So.	19	FL	Denver, Colorado
37	Olsen, Terry	B	6-0	200	Jr.	22	Sq.	Denver, Colorado
39	Fitzgerald, Rob	R	6-2	200	So.	19	FL	Inglewood, Calif.
40	Jackson, Charles	DE	6-2	202	Sr.	22	Sq.	Houston, Texas
41	Olson, Les	B	6-1	210	Sr.	22	2	Kalispell, Montana
42	Murray, John	B	6-0	185	Jr.	20	Sq.	Denver, Colorado
43	Kifus, Rudy	DE	6-1	210	Sr.	21	Sq.	Allison, Pa.
44	Green, Jake	HB	5-9	175	Sr.	22	1	Denver, Colorado
46	Battle, Greg	R	6-0	190	So.	19	FL	Cincinnati, Ohio
48	Stolarz, Tom	DE	6-1	200	Sr.	22	Sq.	Inglewood, Calif.
49	Bitetto, Doug	B	6-1	205	Sr.	22	1	Syracuse, New York
52	Fahrni, Bruce	C	6-2	220	Jr.	20	Tr.	Torrance, California
53	Nogues, Bill	C	6-5	240	Sr.	21	Sq.	Golden, Colorado
54	Fenech, Mike	C	6-0	210	So.	19	FL	Detroit, Michigan
56	Torgerson, Bruce	C	6-1	205	Sr.	21	Sq.	Scottsdale, Arizona
59	Lang, Andrew	C	6-2	230	So.	20	FL	Nashua, N. H.
60	Rohwer, Rick	MLB	6-1	205	So.	20	FL	Evergreen, Colo.
61	Darton, Tim	OG	6-3	230	Jr.	20	Tr.	San Diego, Calif.
62	St. Clair, Steve	R	6-3	190	So.	19	FL	Denver, Colorado
63	Bailey, Ed	DT	6-1	230	So.	20	Fr.	Midland, Texas
64	McGee, Tim	DE	6-0	205	Sr.	22	2	Martinez, Calif.
65	Vernon, Gary	OG	6-0	220	Sr.	22	1	Kalispell, Montana
68	Kuhn, Greg	OG	6-2	236	So.	19	FL	Cuyohoga Falls, Ohio
69	Lasse, Joe	OG	6-2	240	So.	19	FL	Chicago, Illinois
70	Petty, Manson	DT	6-4	245	So.	20	FL	San Antonio, Texas
71	Poindexter, Jack	DT	6-3	240	So.	21	Tr.	Pittsburgh, Penn.
72	Sondrup, Ron	OT	6-2	228	Sr.	21	1	Denver, Colorado
74	Campbell, Dave	OT	6-2	240	Jr.	21	Tr.	Norwalk, California
75	Behrens, Ken	OT	6-3	235	Jr.	20	Tr.	Peoria, Illinois
76	Hillier, Jim	OG	6-2	230	So.	19	FL	LaCanada, Calif.
77	Johanningmeier, Bill	DT	6-5	240	Sr.	22	1	Denver, Colorado
80	Elson, Hal	SE	6¼	177	So.	19	Fr.	Arvada, Colorado
81	Gall, Joe	TE	6-3	205	So.	20	FL	Independence, Mo.
82	Endres, Steve	TE	6-2	215	Sr.	22	1	Lakewood, Colorado
84	Kennedy, Jim	TE	6-3	225	So.	21	Tr.	Sandusky, Ohio
88	McGatlin, Don	SE	6-3	185	Sr.	22	Sq.	Golden, Colorado
89	Hargis, Greg	B	6-2	208	Sr.	21	2	Millbrae, Calif.
90	Chearno, Richard	DE	6-4	235	So.	19	FL	Youngstown, Ohio
91	Nendal, Bruce	DE	6-1	210	So.	19	Fr.	Santa Ana, Calif.
95	Caswell, Gerald	DT	6-4	240	Jr.	21	1	Meadow, Texas



SAVE TIME — SAVE MONEY

3 Convenient Locations in Fort Collins

741 N. COLLEGE

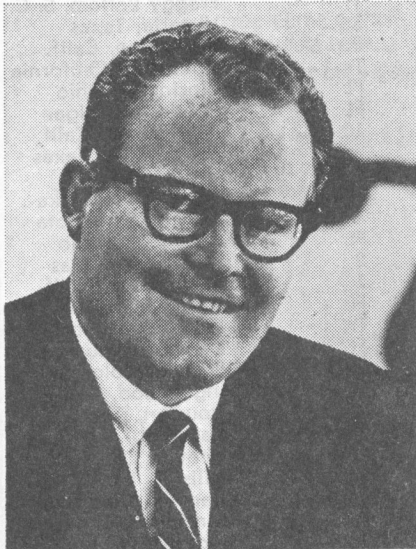
221 W. PROSPECT

VINE DRIVE & SHIELDS

TV FOOTBALL... of Rules, Rain and Ratings



by BEANO COOK, ABC-TV Sports



ROONE ARLEDGE

President and Executive Producer
of ABC Sports

On the 28th floor of ABC Television's office in New York, there is a saying which goes, "If you think the network did a good job in picking this season's college football schedule for television, send all congratulatory mail to Chuck Howard, vice-president of program production, and Jim Spence, vice-president of program planning. If you don't like the schedule, blame Roone Arledge, President of ABC Sports."

See, my friend, it really boils down to one person, Arledge. He makes the final decision. Take the 1969 schedule. When he talked to Darrell Royal of Texas and Frank Broyles of Arkansas about playing the first Saturday in December instead of the middle of October, Royal asked, "Why?"

"It will be for the national championship," replied Arledge casually.

"What about Ohio State?" said Royal. In 1968, the Buckeyes swept to the national title and nearly every key player was returning.

"They will lose," said Arledge. "Don't worry about that. Your game will be for No. 1."

Everybody thought Arledge was nuts, including all the pre-season experts who saw no way Ohio State could lose. Well, as the season progressed, it seemed as if Arledge had been wrong and the game between

Texas and Arkansas would be just for No. 2 and for the Southwest Conference title. After Ohio State walloped Purdue on national television, only Michigan remained for the Buckeyes, who were called by some, "the greatest team ever." A reporter asked Arledge what he thought.

"Look, Ohio State plays at Michigan and 100,000 screaming fans will mean the difference."

As Arledge watched the Ohio State-Michigan game on television, he really didn't believe what he saw. "Look, I thought Ohio State would lose, but when it came down to just one game, I had my doubts."

Arledge, Spence and Howard picked the 1971 television schedule for ABC. The National Collegiate Athletic Association Television Committee only verifies that the schedule meets the criteria of the television plan as voted by the members of the NCAA.

In the early fifties, the NCAA wisely formed a Television Committee, which has closely watched the effect live television has on attendance. Many critics, especially sportswriters, criticize the NCAA for not allowing the network to pick any game. Yet, when television was not controlled, attendance declined. The press blames television for killing boxing, but also criticizes the NCAA when it tries to supervise the televising of college games so the live gate won't decline rapidly.

In recent years, the Television Committee has given ABC more flexibility, especially for late-season games. Sometimes Arledge feels frustrated. When he thinks he has the schedule completed, he notices that a team isn't eligible because of previous appearances on the schedule.

"I remember when we called California to request an earlier start for a certain game," recalled Arledge. "After the call, somebody noticed that California already was on the schedule the maximum number of times permitted. Anyway, we were saved when California called back and said it couldn't accommodate our request. I was quite happy over the refusal."

The general public becomes confused over the various rules, but as a guideline, here are some basic ones to remember. The rules start in the even

years. No team can now appear more than four times in two years, or more than three times in one year. No team can appear on national television more than two times in one year. There are no blackouts. There are a few ramifications to these rules, such as a team can benefit just once in two years from the wildcard game.

Since this year's schedule came in the odd year, Arledge, Howard and Spence had to check the previous year's schedule to be positive that no team would exceed the limit of appearances for a two-year period. When this trio made the schedule, the national dates were completed first. (There are 12 national games and six regional weekends. Each station receives a total of 18 games.)

Then came the 24 games for the regional weekends. "You run into problems but none as rough as having universities move dates, although sometimes you can't blame an athletic director for not switching a date," said Arledge. "However, on some occasions, we are against the wall and must ask institutions to cooperate. In most cases, the athletic directors have been great."

Via the regional weekend games, ABC fulfilled many of the obligations of the contract, such as including at least 12 independent teams on the schedule, and ensuring the required appearances for each major conference for the two-year period.

"I would rate this year's schedule the most difficult one to make in six years because of the problems we faced late in the season," said Arledge. "Yet, I think we will do well ratings-wise, and will provide games of considerable interest and attractiveness regularly."

Under Arledge's brilliant leadership, viewership of NCAA football reached new peaks in 1970.

"If the large cities could have a snowstorm on two straight Saturdays in September, it would help. And if the national games are closer than they were last year, I think 1971 could be a super year. We are the only people who pray for rain for the entire country every Saturday, except at the site of the TV game.

"When it rains on Saturday, several million more fans watch college football on television, and that's good for ABC, the advertisers and college football."

Our '72 wagon tailgates go up, down, sideways, slideways and one even disappears.

We've got five different kinds of wagons. One for every kind of wagon buyer.

Wagons with different kinds of tailgates especially designed for convenience. Including one that vanishes—the window into the roof, the gate under the floor. Out of sight. Out of your way.

Wagons that seat four, six, eight, nine or as

many as twelve. If you like, our Sportvan can even be converted to sleep up to six. We're serious when we say we want your 1972 Chevrolet wagon to be the very best wagon you ever owned.

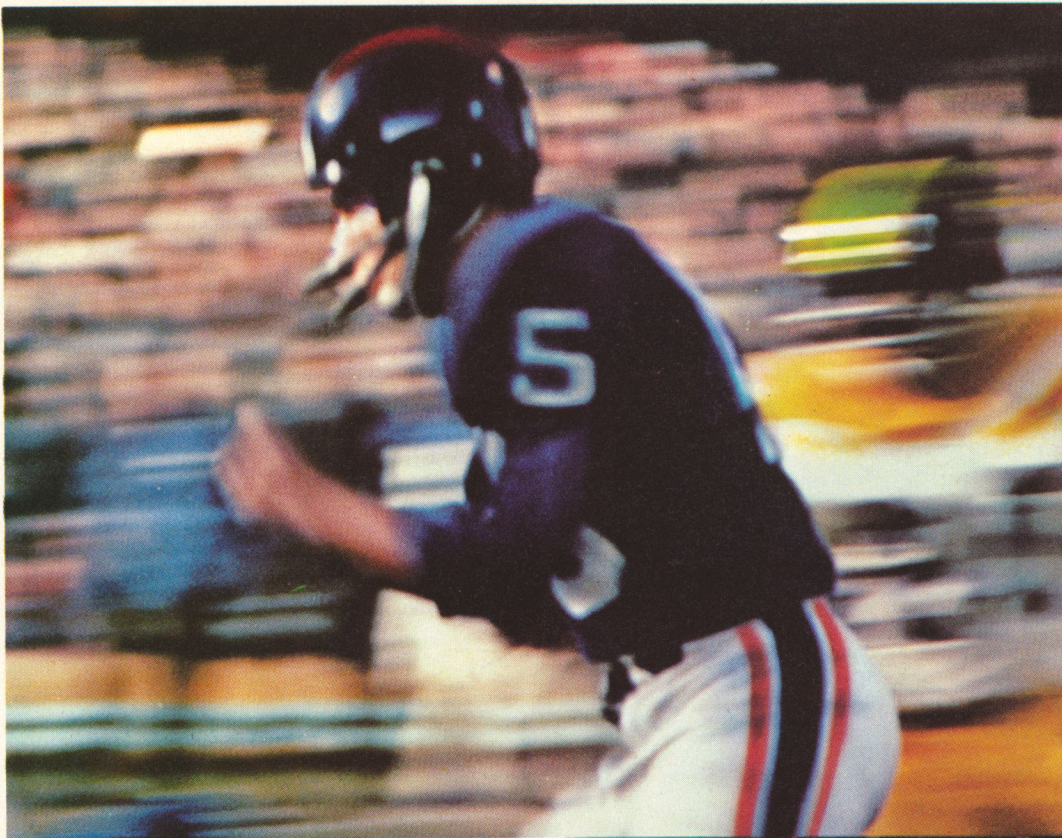


Chevrolet

Pictured at Crown Point near Portland, Oregon are (clockwise) our Sportvan, Suburban, Vega, Chevrolet wagon and Chevelle wagon.

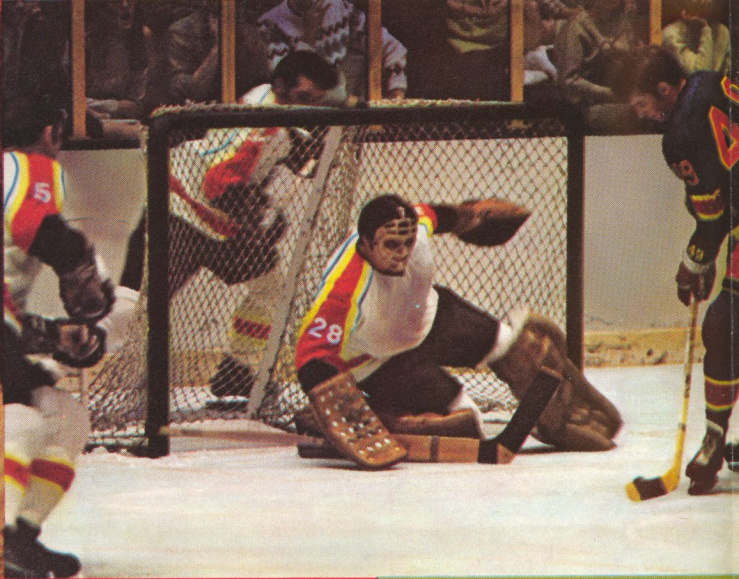


Chevrolet. Building a better way to see the U.S.A.

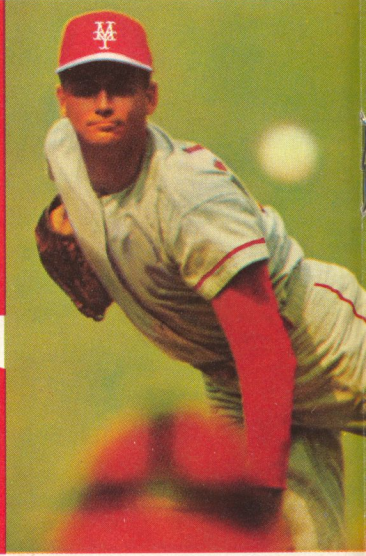


"Coca-Cola" and "Coke" are registered trade-marks which identify the same product of The Coca-Cola Company

Enjoy
Coke
Trade-mark®



Enjoy
Coca-Cola
Trade-mark®



COLORADO STATE

No. Name Pos.

3	Spronk, K	34	Zediker, TE	63	Bailey, DT
5	Blackford, P	35	Bullen, HB	64	McGee, DE
7	Hainlen, K	36	Wallace, FB	65	Vernon, OG
8	Erickson, QB	37	Olsen, B	68	Kuhn, OG
9	Simmons, QB	39	Fitzgerald, R	69	Lasse, OG
10	Hill, P	40	Jackson, DE	70	Petty, DT
11	Ottobrino, QB	41	Olson, B	71	Poindexter, DT
12	Smith, S	42	Murray, B	72	Sondrup, OT
14	Polasek, QB	43	Kifus, DE	74	Campbell, OT
15	Votaw, S	44	Green, HB	75	Behrens, OT
19	Brown, DB	46	Battle, R	76	Hillier, OG
20	Stemrick, SE	48	Stolarz, DE	77	Johanningmeier, DT
22	Jones, HB	49	Bitetto, B	80	Elson, SE
23	Burris, CB	52	Fahrni, C	81	Gall, TE
24	Harms, S	53	Nogues, C	82	Endres, TE
25	Stockham, FS	54	Fenech, C	84	Kennedy, TE
26	Duncan, CB	56	Torgerson, C	88	McGatlin, SE
27	Ruzek, CB	59	Lang, C	89	Hargis, B
28	Leonard, HB	60	Rohwer, MLB	90	Chearno, DE
30	McCutcheon, HB	61	Darton, OG	91	Nenadal, DE
33	Tarver, FB	62	St. Clair, R	95	Caswell, DT

AIR FORCE ACADEMY

10	Koch, S-P	34	Brennan, FB	70	Ogilvie, DT-DE
11	Carlson, QB-FL	35	Gessert, FB	72	Greenlaw, DT
12	Schoeck, QB	42	Murphy, FL	73	Blank, DT
13	Hansen, K	45	Berry, TB	74	Griffith, DT
14	Stonehouse, CB	47	Bryant, DB	75	Hansen, OT
16	Haynie, QB	49	Bream, TB	76	Waller, OT
17	Mitchell, CB	50	Weydert, LB	79	Stucker, OT
18	Hough, CB	51	Sexton, C	80	Bassa, OE
20	Cole, OE	53	Haas, LB	81	Huff, OE
21	Bays, S	54	Theken, LB	82	Machovina, DE-DT
22	Fitzpatrick, S	55	Morris, LB	83	Swertfager, DE
23	Collins, FL	57	Townsend, LB	84	Novak, OE
24	Richardson, CB	58	Mitchell, C	85	Homburg, DE
25	Barry, K-TB	60	Webb, OG	86	Moran, OE
26	Heil, ROV	61	Mayfield, MG	87	Horacek, DE
27	Simmons, S	63	Stanton, OG	88	Healy, OE
31	Beaman, FB	66	Ottofy, OG	89	Holkeboer, DE
32	Janulis, ROV	67	Prill, MG	90	DeHart, DE
33	Murphy, LB	69	Herrick, OG	91	Smith, FL

COCA-COLA BOTTLING CO. OF FORT COLLINS



It's the real thing. Coke.

Trade-mark ®

**The All-American choice
for gasolines and
motor oil.**



Today's All-American team for top engine protection, better performance, and cleaner air: Texaco's great gasolines and Havoline Super Premium All Temperature Motor Oil. So for products you can trust...

**Trust your car to the
man who wears the Texaco star.**



YOU CALL IT!

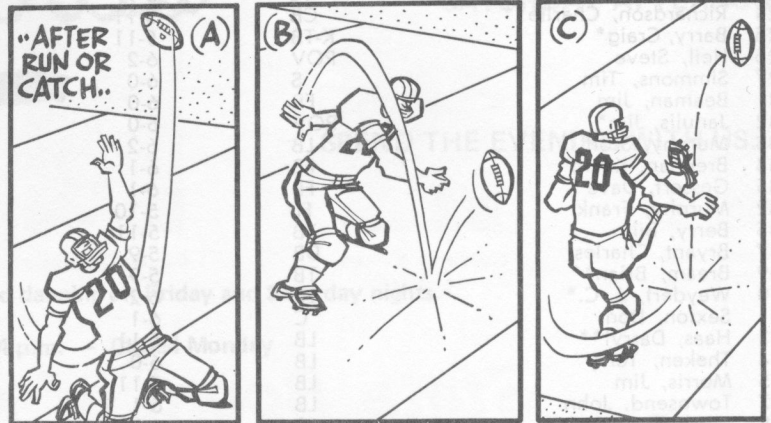
A Quickie Quiz for Grandstand Officials

Situation: Player #20 has completed a long run and the ball has been declared dead. He (A) tossed the ball in the air, (B) throws it to the ground, or (C) kicks it into the stands.

Question: Is a penalty involved?

QUIZ ANSWER

Yes. Players must either leave the ball on the ground after a play is completed or hand it to the nearest official. Failure to do this results in a 15-yard penalty.



Western Athletic Conference Standings



TEAM STANDINGS

	Conference			Pts.	Opp.	All Games				
	W	L	T			W	L	T	Pts.	Opp.
Arizona State	3	0	0	107	28	4	1	0	141	69
New Mexico	1	0	0	14	0	2	1	2	103	110
Brigham Young U.	2	1	0	89	45	3	3	0	144	110
Wyoming	2	1	0	48	44	3	3	0	122	151
Utah	2	1	0	95	67	2	3	0	136	137
Arizona	1	1	0	17	20	2	3	0	78	89
Texas-El Paso	0	3	0	23	70	3	3	0	96	89
Colorado State	0	4	0	36	155	0	5	0	36	165

PASSING

	G	Att.	Comp.	HI	Yds.	TD	Yds. PG
Fox, Wyoming	6	168	81	11	1261	10	210.2
Longmire, Utah	5	148	70	8	794	5	158.8
Simmons, CSU	5	119	53	7	664	1	132.8
Keithley, UTEP	6	108	57	11	739	4	123.2
Demery, Arizona	5	80	38	5	433	3	86.6

RUSHING

	G	Att.	Yds.	TD	Avg. PG
Green, ASU	4	87	529	3	132.3
Henry, NM	5	97	502	4	100.4
Long, NM	5	69	435	4	87.0
Belczyk, Utah	5	72	425	5	85.0
Franklin, Wyo.	6	114	466	2	77.7

PASS RECEIVING

	G	No.	Yds.	Catches P.G.	TD
McKee, Arizona	5	21	322	4.2	1
Graves, Utah	5	21	198	4.2	0

Gadlin, Wyo.	6	24	455	4.0	4
Petty, ASU	5	19	281	3.8	3
Stemrick, CSU	5	19	244	3.8	1

TOTAL OFFENSE

	G	Plays	Yds.	TD-R	Game Avg.
Fox, Wyo.	6	191	1155	10	192.5
Longmire, Utah	5	172	819	6	163.8
Long, NM	5	123	772	5	154.4
Green, ASU	4	87	529	3	132.3
Simmons, CSU	5	145	606	1	121.2

PUNTING

	No.	Yds.	Avg. PK
Bateman, Utah	31	1524	49.2
Keithley, UTEP	46	1916	41.7
Liljenquist, BYU	36	1429	39.7
Hill, CSU	38	1451	38.2
Shuford, Arizona	38	1448	38.1

AIR FORCE ACADEMY ROSTER

No.	Name	Pos.	Ht.	Wt.	Cl.	Hometown
10	Koch, Steve	S-P	5-9	172	Jr.	Oshkosh, Wis.
11	Carlson, Joel*	QB-FL	6-0	187	Jr.	Coloma, Mich.
12	Schoeck, Jim	QB	6-1	174	So.	Webster Groves, Mo.
13	Hansen, Tim	K	6-1	190	Jr.	Osseo, Minn.
14	Stonehouse, Dave	CB	6-1	181	Jr.	Frankfort, N. Y.
16	Haynie, Rich	QB	6-2	188	So.	Florissant, Mo.
17	Mitchell, Duke*	CB	6-1	188	Jr.	Richland, Wash.
18	Hough, Chip	CB	6-2	179	Jr.	Saratoga, Calif.
20	Cole, Mike	OE	6-1	176	So.	Seattle, Wash.
21	Bays, Kent*	S	6-0	171	Sr.	Tulsa, Okla.
22	Fitzpatrick, Charles	S	6-1	185	So.	Cincinnati, Ohio
23	Collins, Dennis	FL	5-9	164	So.	Washington, D. C.
24	Richardson, Charlie**	CB	5-11	181	Sr.	Corpus Christi, Tex.
25	Barry, Craig*	K-TB	5-11	197	Sr.	Leighton, Pa.
26	Heil, Steve	ROV	6-2	187	So.	Gering, Neb.
27	Simmons, Tim	S	6-0	188	Sr.	Winfield, Kan.
31	Beaman, Jim	FB	6-0	198	So.	Berlin, Wis.
32	Janulis, Jim*	ROV	6-0	196	Sr.	Chicago, Ill.
33	Murphy, Scott	LB	6-2	208	So.	Palatine, Ill.
34	Brennan, Kevin*	FB	6-1	211	Sr.	Chicago, Ill.
35	Gessert, Dave*	FB	6-1	214	Jr.	Ypsilanti, Mich.
42	Murphy, Frank	FL	5-10	169	So.	Chicago, Ill.
45	Berry, Bill	TB	5-11	193	So.	Los Angeles, Calif.
47	Bryant, Charles	DB	5-9	182	So.	San Antonio, Tex.
49	Bream, Brian**	TB	5-9	191	Sr.	San Leandro, Calif.
50	Weydert, J. C.*	LB	6-2	211	Sr.	Santa Barbara, Calif.
51	Sexton, Don	C	6-1	211	Sr.	Santa Barbara, Calif.
53	Haas, Darryl**	LB	5-11	198	Sr.	Corpus Christi, Tex.
54	Theken, Terry	LB	6-0	198	Jr.	Wadsworth, Ohio
55	Morris, Jim	LB	5-11	198	So.	Duryea, Pa.
57	Townsend, John	LB	6-1	212	So.	Cullman, Ala.
58	Mitchell, Orderia*	C	6-3	232	Jr.	Elkhart, Ind.
60	Webb, Lance	OG	6-1	202	So.	Springfield, Mass.
61	Mayfield, Willie*	MG	5-9	197	Sr.	Abilene, Tex.
63	Stanton, Jim*	OG	6-2	224	Jr.	Mesquite, Tex.
66	Ottofy, Glyn*	OG	6-2	215	Jr.	St. Louis, Mo.
67	Prill, Mark	MG	6-1	195	Jr.	Port Townsend, Wash.
69	Herrick, Gordon*	OG	6-0	199	Sr.	Brecksville, Ohio
70	Ogilvie, Gene*	DT-DE	6-4	224	Jr.	San Jose, Calif.
72	Greenlaw, John**	DT	6-3	234	Sr.	Vancouver, Wash.
73	Blank, Gary**	DT	5-11	209	Sr.	Morrisville, Pa.
74	Griffith, John**	DT	6-3	233	Sr.	Oklahoma City, Okla.
75	Hansen, Steve	OT	6-3	231	So.	Chadron, Neb.
76	Waller, Steve	OT	6-3	228	Jr.	Carbondale, Ill.
79	Stucker, Pat	OT	6-3	223	Sr.	Grand Junction, Colo.
80	Bassa, Paul**	OE	6-5	199	Sr.	Phoenix, Ariz.
81	Huff, Larry*	OE	6-3	198	Sr.	Indianapolis, Ind.
82	Machovina, George*	DE-DT	6-1	212	Jr.	Elyria, Ohio
83	Swertfager, Tom	DE	6-2	198	Jr.	Bakersfield, Calif.
84	Novak, Dan	OE	6-0	201	So.	Lompoc, Calif.
85	Homburg, Bob*	DE	6-0	196	Jr.	Madison, Wis.
86	Moran, Steve	OE	6-3	204	So.	Alliance, Neb.
87	Horacek, Jim	DE	6-2	212	So.	Tulsa, Okla.
88	Healy, Mike*	OE	6-4	221	Jr.	W. Dundee, Ill.
89	Holkeboer, Tom	DE	6-2	198	So.	Grand Rapids, Mich.
90	DeHart, Paul	DE	6-0	199	So.	Franklin, Ohio
91	Smith, Greg	FL	6-2	176	So.	Houston, Tex.

*—Letters Won

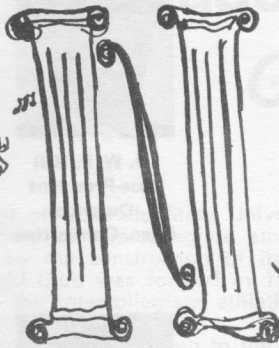
Town House

RESTAURANT

"Home of the Rams"

BREAKFAST — LUNCHES — DINNERS
Char-broiled Steaks and Burgers

920 S. College • "Across from the old field house" • 484-8996



er's

Homemade Italian Food
Cocktails — Beer — Wine
Full American Menu

"FOLLOW THE RAMS"

SATURDAY AFTERNOON

SPEND THE EVENING WITH US.

Live entertainment and dancing on Friday and Saturday nights.

Open 4 p.m. — Closed Monday

1309 E. Mulberry — Hiway 14
484-7033

FORT COLLINS ONLY LOCALLY-OWNED BANK

OPEN 'TILL NOON SATURDAY



ROCKY MOUNTAIN BANK

OAK AT HOWES



Charles L. Terrell
Secretary



Carl G. Breeze
Kremmling
Exec. Committee



Dr. John W. Thimmig
President
Brighton
Exec. Committee



Dr. W. P. Ball
Vice-President
Durango
Exec. Committee



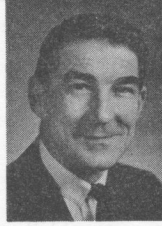
J. R. Hehn
Treasurer



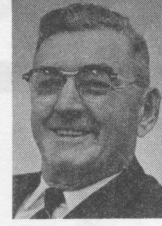
Mary Buchanan
Boulder



Carlyle N. Vickers
Lamar



Edward Hoffmann
Denver



John C. Holtorf
Yuma



Kenneth Monfort
Greeley

State Board of Agriculture CSU Governing Body

Ex Officio Member — President A. R. Chamberlain

- 24 hour developing service on color print film
- The complete photographic and audio shops in Fort Collins
- Friendly-concerned service to the university and Fort Collins for over 50 years

fishback
CAMERA SHOPS

TWO CONVENIENT LOCATIONS

251 So. College

482-8448

702 So. College

482-6446

If you can find a
BETTER STEAK



BUY IT!

3905 S. College

484-3830

Colorado State University

Gold Club

In recognition and support of Colorado State University's decision to participate in the field of intercollegiate athletics in a major way, as implemented by the construction of its new and modern athletic plant, the Gold Club was formed in 1966 to aid in promoting the success of the intercollegiate athletic program at CSU through tangible contributions.

Membership may be obtained by application to the club president. Membership contributions are \$250.00 per year with an agreed obligation to maintain membership for a minimum of four years.

Gold Club members are solidly united in enthusiastic conviction as to the many basic values and virtues of intercollegiate athletics to the participating athlete, the student body, the community and nation.

The names of the members of the GOLD CLUB are not published in the program at the request of the board of directors.

Jim Johnson, President
The Gold Club
P. O. Box 820
Fort Collins, Colorado

I, the undersigned, hereby express my desire to apply for acceptance as a member of The Gold Club. I do so because of my belief in the worth of the intercollegiate athletic competition conducted by Colorado State University and in full knowledge of the requirements and commitments involved.

Signed _____

Street Address _____

City, State, Zip _____

131 S. College

Downtown
Ft. Collins

DIAMONDS
Keepsake
Orange
Blossome
Starfire
Gold Fashion

Garwood's
Jewelers

Earl G. Reider

Watches
Bulova
Carabele
Accutron
Omega
Tissot

Your Fashion Shoe Headquarters

GALS

GUYS

Risque Hush Puppies
Sbicca P.F. Flyers
Miss America Old Maine Trotters
Wejuns Bressan

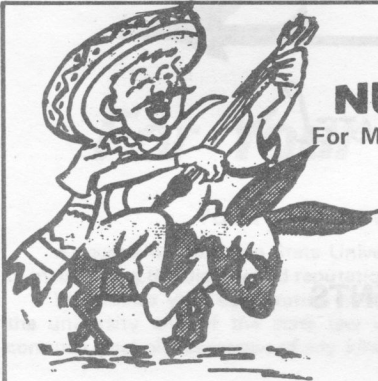
Massagic
Hush Puppies
Dexter
Acme

Village Shoe Shoppe

104 E. Laurel

TOTAL SHOE SERVICE

Phone 484-1912



NUMERO UNO

For Mexican Food in Fort Collins

DINE IN OR
TAKE OUT SERVICE

El Burrito Cafe

FT. COLLINS - GREELEY

484-1102

We Cater To Those Who Appreciate The Finest In Mexican Foods

406 LINDEN

FINA PUTS THE PFUN BACK IN DRIVING!

PATRONIZE THE PFLASH TEAM

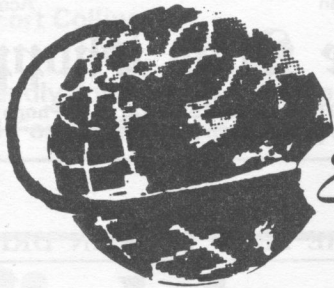
Urbom Oil Company

DISTRIBUTOR FOR FINA PRODUCTS

CSU Pepperettes 1971



Left to Right — Sharon Lewis, Shirley Tillas, Peggy Stockwell, Suzi Marlink, Karen Williams, Lin Shurts, Pam Crim, Susie Woytek, Berta Jones, Nancy Wilhelm, Shauna Sargent, Robin Miller.



Edgerton

World Travel

RED SANFORD
Owner



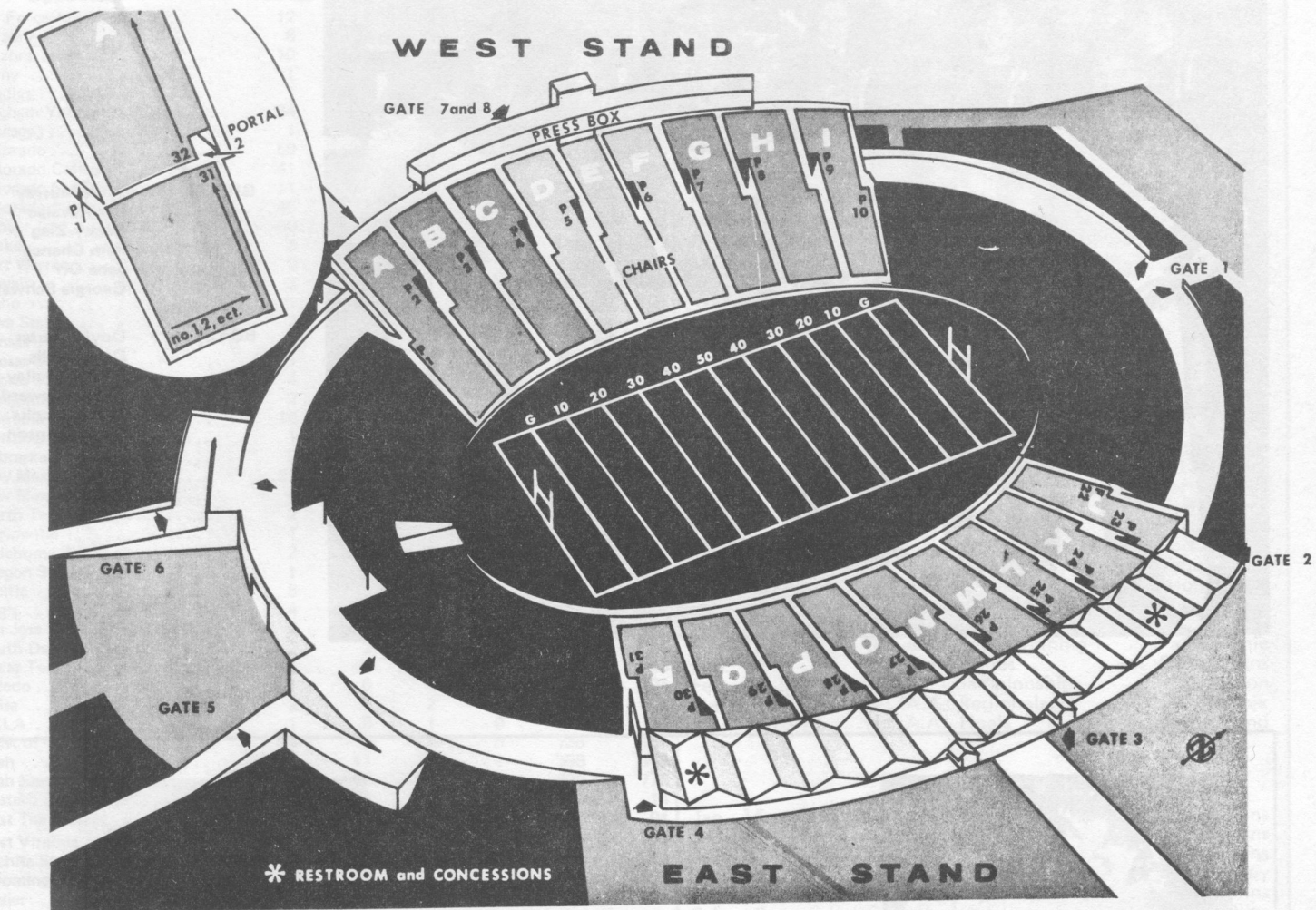
WE MAKE ALL YOUR TRAVEL ARRANGEMENTS

AT NO EXTRA COST

824 S. College

484-1212

Hughes Stadium Seating Plan



Seat Location And Ticket Prices

WEST SIDE — reserved seats, \$5.
EAST SIDE — CSU students and special seating.

NORTH END — general admission, \$3; high school students, \$2; children through age 12, \$1.

For Your Information And Convenience

YOUR COOPERATION, PLEASE

As guests of Colorado State University, your cooperation is solicited in maintaining the dignity and reputation of the institution.

We request your cooperation in observing the rules and traditions of the university and of the state law which makes it illegal to bring or consume alcoholic beverages of any kind on the campus.

LOST AND FOUND

Lost and found articles should be reported to the Campus Police officers on duty.

SPECIAL SERVICE TO PHYSICIANS

Doctors anticipating emergency calls during the games are requested to notify the Campus Police department at 491-6425.

TICKETS

On game day, ticket gates at the south end and east side of the stadium are open at 11 a.m.

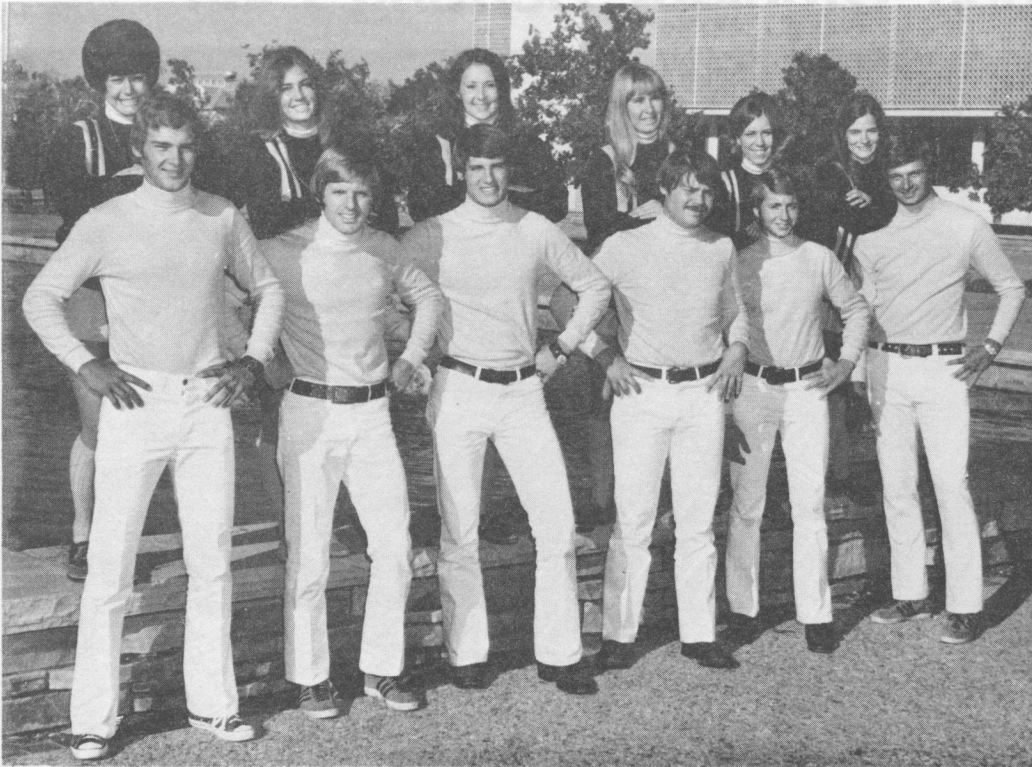
Other home game ticket outlets in Fort Collins are at Alpert's, Hickman's, Hughes' and Soukup's clothing stores, City Drug, Elks Lodge, First National, Poudre Valley and University National Banks, J.C. Penney Co., Montgomery Ward's, and the Classic Department Store.

Handling tickets out of town are J.C. Penney Co. stores in Aurora, downtown Denver, Englewood, Greeley, Longmont, Loveland, Northglenn and Villa Italia Shopping Center in Denver; downtown Denver May-D&F, Cottrels and Williams Wayside Inn in Berthoud.

EMERGENCIES, FIRST AID

In case of illness or accident, fans should attract the attention of an usher for prompt aid. Emergency first aid rooms are located in the center of the concourse level in both the east and west stands. There also is an emergency first aid trailer at the concourse level at the north end.

CSU Cheerleaders



GIRLS, l to r—Kaye Murray
Pat Kavalec
Becky Zieg
Pam Chance
Jane Orr
Georgia Schwabe

BOYS, l to r—Doyle Souser
Dave Lyells
Rick O'Malley
George Seward
Norm Brooks
Dean Simpson



**Corner College
& Laurel**

**TWO CONVENIENT
LOCATIONS**

FOR



**Campus West
Shopping Center**



- ART AND ENGINEERING SUPPLIES
- NEW AND USED TEXT BOOKS
- OUTLINES AND REFERENCE BOOKS
- ALL SCHOOL SUPPLIES
- GREETING CARDS AND GIFTS
- TYPEWRITERS, SALES, REPAIR, RENTAL

CSU's Football Record

Opponents	Games	CSU Won	CSU Lost	Ties	CSU Pts.	Opp. Pts.
Air Force Academy	12	2	9	1	150	355
Arizona	6	0	5	1	19	121
Arizona State	10	0	10	0	71	374
Army	1	0	1	0	6	25
Bradley	1	0	1	0	0	19
Brigham Young	34	20	12	2	645	454
Chicago	1	0	1	0	0	10
Colorado	59	15	42	2	484	1256
Colorado College	41	20	16	5	548	468
Colorado St. College	11	11	0	0	265	58
Colorado Mines	45	27	16	2	809	438
Denver	60	28	27	5	745	764
Drake	5	3	2	0	109	72
Fort Warren	2	1	1	0	31	61
Hawaii	3	2	1	0	67	53
Idaho	1	1	0	0	31	21
Iowa State	2	1	1	0	40	47
Kansas	3	0	3	0	6	60
Kansas St. Teachers	1	1	0	0	77	0
Kansas State U.	4	1	3	0	21	70
Longmont Academy	2	1	1	0	32	28
Montana	16	10	6	0	393	285
Montana Aggies	1	0	0	1	20	20
Nebraska	2	0	2	0	7	27
New Mexico	22	11	11	0	287	364
New Mexico State	4	3	1	0	134	36
North Texas State	2	0	2	0	22	38
Occidental	1	0	1	0	20	21
Oklahoma State	2	1	1	0	20	20
Oregon State	1	0	1	0	14	25
Pacific	8	5	3	0	98	119
Regis	4	3	1	0	94	14
San Jose State	2	1	1	0	14	17
South Dakota State	2	2	0	0	99	20
Texas Tech	1	0	1	0	13	43
Toledo	1	0	1	0	14	24
Tulsa	2	0	2	0	26	68
UCLA	1	0	1	0	7	35
Univ. of Texas-El Paso	7	2	5	0	138	155
Utah	45	11	33	1	388	963
Utah State	54	30	22	2	800	775
Western State	2	2	0	0	59	14
West Texas State	5	2	3	0	105	94
West Virginia	1	0	1	0	21	24
Wichita State	4	3	1	0	153	70
Wyoming	62	33	23	5	979	665
Xavier	1	0	1	0	14	27
Totals	557	253	278	27	8105	8710

CSU Coaches' Records

Jerry Wampfler is the 10th head football coach in Colorado State University history. Sketchy early records indicate CSU played its first two football seasons informally and without a coach. George Toomey, who came in 1900, is listed as the first head coach. Here are the Ram coaches' records:

NAME	Seasons Coached	G	W	L	T	Pts.	Opp.
No Coach	2	9	3	6	0	127	276
George Toomey (1900)	1	4	0	4	0	0	125
C. J. Griffith (1901-1903)	3	17	8	7	2	152	180
John McIntosh (1904-1905)	2	11	2	8	1	67	214
C. Rothgeb (1906-1910)	5	19	3	15	1	82	345
Harry Hughes (1911-1941)	31	232	125	89	18	3426	2274
Julius Wagner (1942-1946)	3	24	7	17	1	241	501
Bob Davis (1947-1955)	9	89	53	34	2	1668	1347
Don Mullison (1956-1961)	6	60	19	40	1	732	1284
Mike Lude (1962-1969)	8	81	29	51	1	1404	1908
Jerry Wampfler (1970-)	1	11	4	7	0	206	256
Totals	71	557	253	278	27	8105	8710

1971-72 WINTER SPORTS SCHEDULE

Indoor Track Schedule

Date	Opponent or Meet	Site
Dec. 11	U.S.T.F.F. Indoor Meet	at Omaha
Jan. 28	Air Force	at Air Force
Feb. 5	Idaho State Invitational	at Pocatello
Feb. 12	U. of Wyoming and U. of Northern Colorado	at Ft. Collins
Feb. 18-19	WAC Indoor Championships	at Salt L. C.
Mar. 4	Air Force and Adams State	at Air Force
Mar. 11	University of Colorado	at Boulder
Mar. 18	U. of Colorado (Invitational)	at Boulder

Wrestling Schedule

Dec. 4	AFA Invitational	at Air Force
Dec. 10-11	Beehive Invitational	at Salt Lake City
Dec. 14	Arizona State University	at Fort Collins
Jan. 7	Brigham Young University	at Provo
Jan. 8	Utah University	at Salt Lake City
Jan. 11	Oregon State University	at Fort Collins
Jan. 14	Western State	at Fort Collins
Jan. 15	Air Force Academy	at Air Force
Jan. 19	Iowa State	at Fort Collins
Jan. 22	New Mexico	at Albuquerque
Jan. 28-29	MIWA Tournament	at Gunnison, Colo.
Feb. 4	South Dakota University	at Fort Collins
Feb. 11	University of Colorado	at Boulder
Feb. 18	University of Wyoming	at Laramie
Feb. 19	Colorado Mines	at Fort Collins
Feb. 25-26	W.A.C. Championships	at Tucson
Mar. 3-4	N.C.A.A. Regionals	at Phoenix
Mar. 9-10-11	N.C.A.A. Finals	at Maryland

Gymnastics Schedule

Jan. 15	Denver	Fort Collins
Jan. 22	Arizona State	Fort Collins
Jan. 28	Arizona	Fort Collins
Jan. 29	Northern Colorado	Greeley
Feb. 4	Air Force Academy	Fort Collins
Feb. 9	Oregon	Fort Collins
Feb. 11	New Mexico	Fort Collins
Feb. 18	New Mexico	Albuquerque
Feb. 21	Southern Illinois	Fort Collins
Feb. 26	Colorado	Boulder
Mar. 3	Utah	Salt Lake City
Mar. 4	Brigham Young University	Provo
Mar. 17	Denver (Compulsory Routines)	Denver
Mar. 23-25	W.A.C. Championships	Tempe, Arizona
Mar. 30-Apr. 1	N.C.A.A. Championships	Ames, Iowa

Swimming Schedule

Jan. 8	Denver University Relays	Denver
Jan. 22	Wyoming	Laramie
Jan. 28-29	W.A.C. Relays	Albuquerque
Feb. 4	New Mexico	Fort Collins
Feb. 5	Colorado U. and Nebraska	Fort Collins
Feb. 11-12	Utah, Brigham Young University and Wyoming	Salt Lake City
Feb. 18	Denver U. and Colo. Sch. of Mines	Denver
Feb. 19	Wyoming	Fort Collins
Feb. 26	Air Force Academy	Air Force Academy
Mar. 2-4	W.A.C. Championships	Fort Collins
Mar. 23-25	N.C.A.A. Championships	West Point, N. Y.

Colorado State University Football Records

RUSHING

- Most Attempts (career)**—
550, Oscar Reed, 1965-67
320, Gary Glick, 1953-55
259, Frank Faucett, 1948-50
- Most Attempts (season)**—
213, Oscar Reed, 1967
159, Frank Faucett, 1949
146, Lawrence McCutcheon, 1969
- Most Attempts (single game)**—
32, Lawrence McCutcheon, WTS, 1969
28, Oscar Reed, WTS, 1967
- Most Net Yards (career)**—
2,581, Oscar Reed, 1965-67
1,381, Wayne Schneider, 1957-59
1,150, Gary Glick, 1953-55
1,120, Frank Faucett, 1948-50
- Most Net Yards (season)**—
946, Oscar Reed, 1966
- Most Net Yards (single game)**—
213, Lawrence McCutcheon, WS, 1969
194, Oscar Reed, WTS, 1966
183, Jack Christiansen, DU, 1950
- Highest Avg. Per Rush (career)**—
8.1, Jack Christiansen, 1948-50
- Highest Avg. Per Rush (season)**—
8.1, Jack Christiansen, 1950
- Highest Avg. Per Rush (single game)**—
16.2, Lawrence McCutcheon, WS, 1969
13.6, Jack Christiansen, CC, 1950

PASSING

- Most Passes Attempted (career)**—
311, Don Burroughs, 1950-51
289, Bob Wolfe, 1964-66
254, Chip Maxwell, 1968-
242, Bob Hainlen, 1946-48
- Most Passes Attempted (season)**—
205, Chip Maxwell, 1969
194, Jerry Montiel, 1967
160, Don Burroughs, 1951
160, Bob Wolfe, 1966
- Most Passes Attempted (single game)**—
32, Jerry Montiel, NTS, 1967
29, Chip Maxwell, Idaho, 1969
- Most Passes Completed (career)**—
162, Don Burroughs, 1950-51
151, Jerry Montiel, 1967-68
119, Bob Wolfe, 1964-66
109, Chip Maxwell, 1968-
86, Bob Hainlen, 1946-48
- Most Passes Completed (season)**—
109, Chip Maxwell, 1969
86, Don Burroughs, 1951
- Most Passes Completed (single game)**—
18, Chip Maxwell, AS, 1969
15, Don Burroughs, Utah, 1952
- Most Yards Gained (career)**—
2,145, Don Burroughs, 1950-51
2,016, Jerry Montiel, 1967-68
1,581, Bob Wolfe, 1964-66
1,499, Chip Maxwell, 1968-
1,110, Gary Glick, 1953-55
- Most Yards Gained (season)**—
1,279, Don Burroughs, 1951
1,257, Chip Maxwell, 1969
1,031, Jerry Montiel, 1968
- Most Yards Gained (single game)**—
217, Jerry Montiel, WS, 1967
210, Chip Maxwell, Idaho, 1969
- Most Touchdown Passes (career)**—
15, Don Burroughs, 1950-51
13, Bob Wolfe, 1964-66
12, Jerry Montiel, 1967-68
9, Chip Maxwell, 1968-
8, Bob Hainlen, 1946-48

- Most Touchdown Passes (season)**—
8, Chip Maxwell, 1969
8, Don Burroughs, 1951
6, Jerry Montiel, 1968
- Most Touchdown Passes (single game)**—
3, Don Burroughs, DU, 1952
3, Bob Wolfe, Tulsa, 1965
3, Jerry Montiel, WS, 1967
- Highest Pct. Complete (career)**—
.521, Don Burroughs, 1950-51
- Highest Pct. Complete (season)**—
.538, Don Burroughs, 1951
.531, Chip Maxwell, 1969
- Highest Pct. Complete (single game)**—
.857, Gary Glick, Utah State, 1954

PASS RECEIVING

- Most Passes Caught (career)**—
59, Jim David, 1949-51
45, Gary Sander, 1953-55
- Most Passes Caught (season)**—
46, Jim David, 1951
38, Harry Stevenson, 1969
38, Terry Swarn, 1968
- Most Passes Caught (single game)**—
8, Jim David, BYU, 1951
8, Harry Stevenson, AS, 1969
- Most Yards Gained Catching Passes (career)**—
793, Jim David, 1949-51
793, Gary Sanders, 1953-55
- Most Yards Gained Catching Passes (season)**—
563, Terry Swarn, 1968
551, Jim David, 1951
- Most Yards Gained Catching Passes (single game)**—
161, Terry Swarn, WTS, 1968
153, Jim David, AS, 1950
- Most Touchdown Passes Caught (career)**—
8, Jim David, 1949-51
7, Keith Thompson, 1947-48
7, Tom Pack, 1964-66
6, Terry Swarn, 1966-68
- Most Touchdown Passes Caught (season)**—
5, Jim David, 1951
5, Jerry Spackman, 1965
5, Terry Swarn, 1968
- Most Touchdown Passes Caught (single game)**—
2, Terry Swarn, WY, & UTEP, 1968

TOTAL OFFENSE

- Most Plays (career)**—
551, Oscar Reed, 1965-67
537, Jerry Montiel, 1967-68
508, Gary Glick, 1953-55
417, Bob Wolfe, 1964-66
404, Don Burroughs, 1950-51
- Most Plays (season)**—
287, Gary Glick, 1954
276, Jerry Montiel, 1967
261, Jerry Montiel, 1968
254, Chip Maxwell, 1969
- Most Plays (single game)**—
41, Gary Glick, NM, 1954
41, Jerry Montiel, NTS, 1967
41, Chip Maxwell, BYU, 1969
- Most Yards Gained (career)**—
2,581, Oscar Reed, 1965-67
2,260, Gary Glick, 1953-55
2,157, Jerry Montiel, 1967-68
2,129, Don Burroughs, 1950-51
- Most Yards Gained (season)**—
1,371, Chip Maxwell, 1969
1,279, Gary Glick, 1954
1,104, Jerry Montiel, 1967

- Most Yards Gained (single game)**—
230, Gary Glick, NM, 1954
226, Chip Maxwell, Idaho, 1969
213, Lawrence McCutcheon, WS, 1969

SCORING

- Most Touchdowns (career)**—
26, Oscar Reed, 1965-67
14, Joe Mohorich, 1951-53
10, Lawrence McCutcheon, 1969-
- Most Touchdowns (season)**—
11, Oscar Reed, 1966
10, Lawrence McCutcheon, 1969
9, Pat Green, 1947
- Most Touchdowns (single game)**—
4, Oscar Reed, AF, 1966
3, Lawrence McCutcheon, BYU, 1969
- Most Points After Touchdown (career)**—
55, Al Lavan, 1965-67
53, Frank Faucett, 1948-50
50, Buck Rollins, 1951-53
- Most Points After Touchdown (season)**—
28, Bob Wolfe, 1965
28, Al Lavan, 1967
21, Dan Torzala, 1969
- Most Points After Touchdown (single game)**—
11, Al Lavan, KST, 1967
- Most Field Goals Made (career)**—
14, Al Lavan, 1965-67
9, Bob Wolfe, 1964-66
6, Bob Hainlen, 1946-48
- Most Field Goals Made (season)**—
8, Bob Wolfe, 1965
5, Dan Torzala, 1969
- Most Field Goals Made (single game)**—
3, Bob Hainlen, CU, 1948
- Most Points Scored (career)**—
156, Oscar Reed, 1965-67
134, Frank Faucett, 1948-50
114, Gary Glick, 1953-55
- Most Points Scored (season)**—
70, Frank Faucett, 1949
66, Gary Glick, 1955
66, Oscar Reed, 1966
60, Lawrence McCutcheon, 1969
- Most Points Scored (single game)**—
24, Oscar Reed, AF, 1966

PUNTING

- Most Punts (career)**—
132, Bob Hainlen, 1946-48
103, Jerry Callahan, 1951-56
- Most Punts (season)**—
64, Woddy Fries, 1940
59, Ted Hill, 1969
- Most Punts (single game)**—
14, Ted Hill, Wyo., 1969
13, Bob Hainlen, DU, 1947
- Highest Avg. Per Punt (career)**—
38.05, Jerry Callahan, 1951-56
38.03, Bob Hainlen, 1946-48
- Highest Avg. Per Punt (season)**—
44.9, Larry Barnes, 1956
- Highest Avg. Per Punt (single game)**—
50.8, Bob Hainlen, Utah State, 1947

INTERCEPTIONS

- Most Intercepted (career)**—
14, Gary Glick, 1953-55
14, Bill Kishman, 1966-68
9, Duane Rice, 1949-51
9, Jerry Barnes, 1963-65
9, Al Lavan, 1965-67
9, Jerry Shearer, 1967-69

- Most Intercepted (season)**—
8, Gary Glick, 1954
- Most Intercepted (single game)**—
3, Jerry Barnes, BYU, 1965
- Most Yards Returned on Interceptions (career)**—
215, Gary Glick, 1953-56
141, Jack Christiansen, 1948-50
- Most Yards Returned on Interceptions (season)**—
168, Gary Glick, 1954
- Most Yards Returned on Interceptions (single game)**—
78, George Polka, KSU, 1967

KICKOFF RETURNS

- Most Returned (career)**—
21, Al Dorsey, 1951-53
21, Wayne Schneider, 1957-59
17, Earlie Thomas, 1967-69
- Most Returned (season)**—
12, Ron Ericson, 1955
12, Wayne Walter, 1955
11, Earlie Thomas, 1969
- Most Returned (single game)**—
7, Phil Webb, AS, 1969
5, Wayne Walter, Utah, 1956
4, Earlie Thomas, US, 1969
- Most Yards Gained on Kickoff Returns (career)**—
447, Phil Jackson, 1962-63
443, Duane Rice, 1951-53
- Most Yards Gained on Kickoff Returns (season)**—
311, Randy Beverly, 1965
- Most Yards Gained on Kickoff Returns (single game)**—
166, Phil Webb, AS, 1969
135, Brady Keys, Utah, 1959

PUNT RETURNS

- Most Returned (career)**—
44, Red Eastlack, 1940-41
37, Jack Christiansen, 1948-50
- Most Returned (season)**—
29, Red Eastlack, 1940
- Most Returned (single game)**—
9, Joe Folsom, Wyo., 1948
- Most Yards Gained on Punt Returns (career)**—
626, Jack Christiansen, 1948-50
489, Duane Rice, 1949-50
- Most Yards Gained on Punt Returns (season)**—
328, Duane Rice, 1950
- Most Yards Gained on Punt Returns (single game)**—
149, Ollie Woods, BYU, 1948

LONGEST PLAYS

- Longest Rush**—
86, Wayne Schneider, BYU, 1958
- Longest Completed Pass**—
80, Jerry Callahan to Ron McClary, CU, 1956
- Longest Interception Runback**—
76, Gene Spencer, Utah, 1950
- Longest Punt Return**—
89, Jack Christiansen, CU, 1948
- Longest Punt**—
77, Larry Barnes, DU, 1956
- Longest Blocked Field Goal Return**—
55, John Cook, Oregon S, 1962
- Longest Field Goal**—
48, Dan Torzala, Utah S, 1969

CSU Training Staff



FRONT ROW (L-R)—Ron Stjernholm, trainer Clint Thompson, Bruce Curtis and Gregg Plush.
 BACK ROW (L-R)—John Schluz, Ralph Engstrom, Jay Berglund, Dale Hawkins, Jeff Davis and Bill Johnson.

ROBERT W. WALTERS

— Standard Oil Agent —

Wholesale Gasoline and Motor Oils



799 NORTH COLLEGE

PHONE 482-0645

Galyardt & Harvey Insurance Agency, Inc.

ALL LINES OF INSURANCE

W. J. Galyardt

Jack Harvey

Ken Borrett

Wilmer Lapp

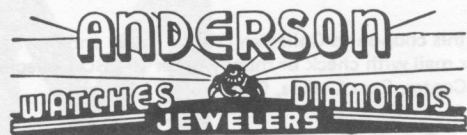
Dave Parker

Savings Building, Ground Floor

Phone 482-7747

HOME OF FINE DIAMONDS, WATCHES AND JEWELRY

See Our Diamonds in Privacy in Our
Diamond Room



118 No. College

482-5792

Your Jeweler Since 1908

CSU's Opponents At A Glance

Team	Sept. 11	Sept. 18	Sept. 25	Oct. 2	Oct. 9	Oct. 16	Oct. 23	Oct. 30	Nov. 6	Nov. 13	Nov. 20	Nov. 27
Brigham Young	North Tex. @ Dallas-N Sept. 10	CSU @ Provo-N	Kansas St. @ Manhattan	New Mexico @ Provo-N Oct. 1	Utah State @ Logan	Wyoming @ Laramie	Tulsa @ Tulsa	UTEP @ El Paso-N	Arizona St. @ Tempe-N	Arizona @ Provo	Utah @ Provo	OPEN
Idaho	Boise State @ Moscow	Iowa State @ Ames	CSU @ Spokane--N	Montana @ Missoula	Idaho St. @ Moscow	Pacific @ Stockton	West Texas @ Canyon	New Mex. St. @ Las Cruces	Weber St. @ Ogden	Montana St. @ Moscow	Utah State @ Moscow	OPEN
Wyoming	South Dakota @ Laramie	Colorado @ Boulder	Air Force @ Colo. Springs	CSU @ Laramie	Arizona @ Laramie	Brigham Young @ Laramie	UTEP @ Laramie	Utah @ Salt Lake	Utah State @ Logan	Arizona St. @ Tempe-N	New Mexico @ Albuquerque	OPEN
Arizona State	OPEN	Houston @ Tempe-N	Utah @ Salt Lake	UTEP @ Tempe-N	CSU @ Ft. Collins	Oregon State @ Portland-N	New Mexico @ Albuquerque-N	Air Force @ Tempe-N	Brigham Young @ Tempe-N	Wyoming @ Tempe-N	San Jose @ San Jose	Arizona @ Tempe-N
Utah	OPEN	Oregon @ Eugene-N	Arizona St. @ Salt Lake	Wash. State @ Salt Lake	UTEP @ El Paso-N	CSU @ Salt Lake	Arizona @ Tucson-N	Wyoming @ Salt Lake	New Mexico @ Albuquerque	Utah State @ Salt Lake	Brigham Young @ Provo	Houston @ Houston-N
Air Force	OPEN	Missouri @ USAFA	Wyoming @ USAFA	Penn State @ University Pk.	SMU @ USAFA	ARMY @ USAFA	CSU @ Ft. Collins	Arizona St. @ Tempe-N	Oregon @ USAFA	Tulsa @ Tulsa	Colorado @ Boulder	OPEN
Utah State	Kansas St. @ Manhattan	N. Mex. St. @ Logan	Nevada @ Logan	Nebraska @ Lincoln	Brigham Young @ Logan	Memphis St. @ Logan	San Diego @ San Diego-N Oct. 22	CSU @ Ft. Collins	Wyoming @ Logan	Utah @ Salt Lake	Idaho @ Moscow	OPEN
Wichita State	Texas A&M @ College Sta.-N	Arkansas St. @ Wichita-N	Trinity @ Wichita-N	Southern Ill. @ Carbondale-N	OPEN	Cincinnati @ Cincinnati-N	Louisville @ Louisville-N	West Texas @ Wichita-N	CSU @ Wichita	N. Mex. St. @ Wichita	North Texas @ Denton-N	Tulsa @ Wichita
West Texas State	Memphis St. @ Memphis-NI	Lamar Tech @ Canyon-N	OPEN	Tulsa @ Canyon-N	UT Arlington @ Canyon-N	Northern Ill. @ Canyon-N	Idaho @ Canyon-N	Wichita St. @ Wichita-N	N. Mex. St. @ Las Cruces-N	CSU @ Ft. Collins	Drake @ Canyon-N	Southern Miss. @ Hattiesburg
Texas El Paso	UT Arlington @ El Paso-N	Pacific @ El Paso-N	Arizona @ El Paso-N	Arizona St. @ Tempe-N	Utah @ El Paso-N	New Mex. St. @ Las Cruces-N	Wyoming @ Laramie	Brigham Young @ El Paso-N	OPEN	New Mexico @ Albuquerque	CSU @ El Paso-N	Long Beach @ El Paso-N
New Mexico State	Drake @ Las Cruces-N	Utah State @ Logan	North Texas @ Las Cruces-N	SMU @ Dallas	New Mexico @ Albuquerque-N	UTEP @ Las Cruces-N	UT Arlington @ Arlington-N	Idaho @ Las Cruces-N	West Texas @ Las Cruces-N	Wichita St. @ Wichita	OPEN	CSU @ Ft. Collins

Follow the Rams every weekday in the CSU "Collegian."
The Rocky Mountain's Largest Student Newspaper.

Order Now
CSU Collegian Mail Subscription

Rates: **\$7.00 per year**
2.50 per Quarter

Name

Address

(Return this coupon to Collegian Office, North end of Student Center or mail with check or money order to CSU Collegian, Student Center, Fort Collins, Colo. 80521.)

Send the Collegian Home

READ

Tom Shipp

Rick Lohman

and

Rick Jussel

Keep up on all the Latest Ram news year round.

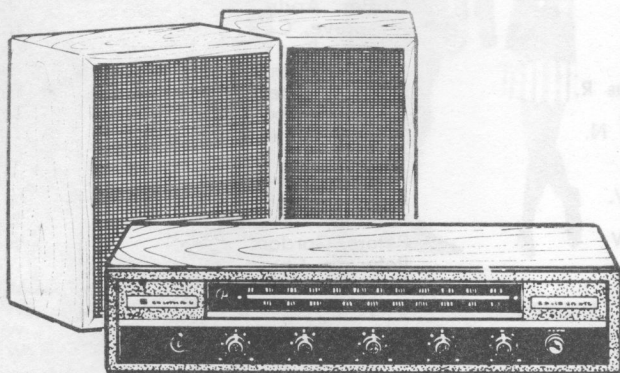
CSU Beef Club



The CSU Beef Club promotes intercollegiate athletics as well as Colorado Beef. Membership is open to anyone who is able to donate beef, but the exclusiveness of the club it seems, stems from the fact that not everyone has a beef grazing in their backyard to give away. For information regarding the Beef Club contact Jack O'Leary, assistant director of athletics, at 491-6020

GO TEAM! GO TEAM! GO TEAM! GO TEAM! GO TEAM! GO TEAM! GO TEAM! GO TEAM! GO TEAM!

Score with TEAM



AT TEAM WE HAVE THE
NEWEST AND FINEST
HI FIDELITY STEREO
SYSTEMS AND
COMPONENTS.
COME IN AND
DIG THE SOUNDS.

TEAM

107 South College

OPEN WEEKDAYS TIL' 9pm

484-7500

GO TEAM! GO TEAM! GO TEAM! GO TEAM! GO TEAM! GO TEAM! GO TEAM! GO TEAM! GO TEAM!



Ram Boosters

1971-72



Lynn Carlisle President
 Ken Borrett Vice-President
 Bill Dingler Secretary-Treasurer

BOARD OF DIRECTORS

N. Paul E. Anderson, Ron Bateman, Ralph Beyersdorf,
 Bill Davis, Ted Davis, Vern Dyke, Russ Hunter, Harold
 Kuemmerlin, Bob Lamson, Maurice Nelson, Rodger St.
 Michel, Pat Waneka

(Membership as of September 20)

Ahlbrandt, Harry L.
 Allen, Ken
 Anderson, Al
 Anderson, N. Paul E.
 Andrijeske, John J. W.
 Armstrong, David W.
 Aro, Richard S.
 Baker, Richard S.
 Bartlett, C. L.
 Basye, Charles E.
 Bateman, Ronald L.
 Bay, Robert C.
 Bartran, William D.
 Benedict, R. Neil
 Bever, Howard
 Beyersdorf, Ralph E.
 Blazek, Charles R.
 Blevins, T. R.
 Borrett, Ken
 Bowser, Jim
 Brack, Henry B.
 Braden, Ralph A.
 Cain, Bernie
 Carlisle, Lynn D.
 Carlson, Robert E.
 Carroll, Ed
 Carson, Karl E.
 Carson, Tom
 Carter, Joe
 Chadwick, Don
 Cloos, Drexel H.
 Collins, E. R.
 Conley, Don
 Cooper, Lee H.
 Cornell, Dale F.
 Cornell, Harry
 Cowell, Dick
 Cox, Jim
 Crandall, L. B.
 Crews, Don
 Crisman, Chester C.
 Dalton, Dick
 Davin, William R.
 Davis, Mrs. Bob
 Davis, Robert W.
 Davis, Ted
 Davis, William K.
 Davidson, Clifton O.
 Dellenbach, R. W.
 Dingler, Bill
 Dotson, H. L.
 Dressel, William F.
 Dunn, Bob
 Dunn, Jerry

Dyke, Vern
 Ellis, Mike
 Enright, Don
 Erickson, Kenneth C.
 Everitt, L. G.
 Everitt, R. S.
 Fabrizius, Harold
 Falk, Dale
 Falk, Marty
 Fegley, Harry S.
 Fetters, Lee
 Finn, Calvin L.
 Fisher, John
 Funk, Ted
 Garretson, Ron
 Garwood, Gary
 Gibson, Carl
 Gilfillan, David L.
 Giuliano, John T.
 Gleason, Tom
 Gotz, Gary
 Grant, Don
 Gross, Kenneth H.
 Gunderson, Peter G.
 Habel, Charles W.
 Hallock, Rex
 Hansen, Bill
 Hanson, Edwin N.
 Harris, Ralph
 Harvey, Jack A.
 Haxton, Gary
 Headlee, Floyd C.
 Herzog, C. William
 Hickey, Lloyd C.
 Hill, Alden T.
 Hill, Alden V.
 Hittle, Lee
 Hook, William
 Huddleson, Charles R.
 Hulbert, Marvin F.
 Humphrey, Robert N.
 Hunt, Robert J.
 Hunter, Russell
 Hutchins, Clyde W.
 Jensen, Don
 Johnson, Harold W.
 Johnson, Melvin
 Johnson, Robert D.
 Jordan, Richard D.
 Juilian, Dave
 Jungmeyer, W. E.
 Keane, John E.
 Keese, James C.
 Klemsz, Loyd W.

Kramer, Ted J.
 Krause, Dewayne
 Kresl, Ron
 Kruchten, Alvin J.
 Krug, Hubert L.
 Kuemmerlin, Harold
 Kurtz, W.
 Lacey, Dan
 Lamb, J. Rod
 Lamson, Bob
 Lent, Joe
 Letey, Gary
 Leydens, Frank
 Lewis, Bill
 Lindell, Harold
 Littrell, Max
 Lowe, R. T.
 Markley, Doug
 Marshall, Robert E.
 Mathews, James H.
 Maxey, Loren R.
 McIntosh, Ira U.
 McLaughlin, Don
 Medlin, Lex M.
 Melani, Arnold R.
 Merrick, Gordon R.
 Meyer, Mike
 Miller, Jack
 Miller, Keith D.
 Miller, J. Robert
 Mock, George
 Moninger, Robert E.
 Moore, Jerry S.
 Morgan, William E.
 Mosier, Arvin
 Musgrave, C. A.
 Nelson, Bert
 Nelson, Maurice O.
 Nelson, Robert G.
 Nettleton, John D.
 Nichols, James
 Olander, Ed
 Parker, Dave
 Pastor, Ken R.
 Penfold, Richard L.
 Peters, Gordon
 Peterson, Chuck
 Peterson, J. R.
 Peterson, Lyle E.
 Pike, Robert H.
 Pope, Chas. H.
 Poston, Paul R.
 Power, Richard E.
 Preble, Parker

Price, Joe
 Rains, Melvin C.
 Richey, Robert L.
 Riffenburgh, Waldo
 Rolston, Reuel Y.
 Nesbitt, Harvey
 Sand, Robert E.
 Sanford, Red
 Schmidt, Ron
 Schneider, S. R.
 Schwartz, Howard
 Seligmann, Gunther
 Shalla, Stan
 Sheely, Arthur C.
 Shoemaker, Del
 Siblingud, Robert L.
 Sisson, Ron
 Skrdlant, Leland D.
 Smith, Leroy K.
 Smith, Willis
 Soukup, Jerome W.
 Spencer, Gene
 Spillman, Richard F.
 Stark, Lee A.
 St. Michel, Rodger
 Stoll, Reinhold
 Stuckenschneider, Hugo
 Sundquist, Glenn V.
 Swartz, Jack H.
 Templar, Jerry
 Terrell, Chuck
 Teterock, J. Guy
 Thomas, Mike
 Thomas, Wm. A.
 Thornton, Bruce J.
 Thye, Gregory S.
 Tharsher, J. Malcolm
 Tiley, K. Bill
 Timmermans, Gene
 Toliver, John M.
 Troxell, H. E.
 Urbom, Richard D.
 Wager, Larry R.
 Waneka, G. P.
 Washburn, Lynn H.
 Weakleh, Robert J.
 Wilcox, Roe M.
 Willoughby, Rex
 Wilson, Gil
 Wilson, Dan
 Wilson, Leonard
 Wilson, Tom
 Wolfe, Kelly D.
 Wood, David L.

Concession booths are located beneath the east and west stands. Operated by the university's athletic department, the concession stands feature self-service. Instead of waiting to be served, pass through the line in front of each booth, choose what you like and pay the cashier at the end of the line. Vendor service is available in the stands. Prices are:

Pop Corn—30¢
 Hot Dogs—30¢

Peanuts—25¢
 Candy—10¢

Coke—25¢
 Coffee—15¢

Hot Dr.
 Pepper—15¢

Our team goes where your team goes.



Frontier flies to all the Western Athletic Conference towns. So, why not let our team take you to your team.

Group fares can save you up to 30%. Or, you can use Frontier's Family Plan seven days a week.

At Frontier, there's no such thing as an away game.

FRONTIER AIRLINES
a better way to fly

All-time Scoreboard

1893 (2-4-0)		6 Colorado College	29	0 Denver	10	1912 (3-2-0)	
Coach: None		5 Denver	11	4 Mines	21	Coach: Harry Hughes	
8 Longmont Acad	12	6 Mines	6			14 Denver	13
24 Longmont Acad	16		47			21 Colorado	0
6 Colorado	70	1903 (6-1-0)		Coach: Claude J. Rothgeb		37 Wyoming	0
60 Denver	10	Coach: C. J. Griffith		0 Colorado College	20	0 Mines	14
6 Mines	12	0 Colorado	5	13 Colorado	17	0 Colorado College	13
6 Colorado	44	8 Colorado College	5	0 Mines	35	72	40
56	164	23 Denver	6	0 Denver	5	1913 (3-2-0)	
1899 (1-2-0)		16 Denver	6	Coach: Claude J. Rothgeb		Coach: Harry Hughes	
Coach: None		23 Denver	17	0 Colorado	40	20 Denver	6
0 Colorado	63	16 Utah	0	0 Denver	16	7 Colorado	16
5 Mines	49	17 Wyoming	0	20 Wyoming	0	20 Utah State	7
12 Wyoming	0	90	35	20	56	7 Mines	14
17	112	1904 (0-4-1)		20		61 Wyoming	0
1900 (0-4-0)		Coach: John McIntosh		1908 (1-2-0)		115	43
Coach: George Toomey		0 Denver	18	Coach: Claude J. Rothgeb		1914 (3-4-0)	
0 Colorado College	53	0 Colorado College	3	6 Colorado College	31	Coach: Harry Hughes	
0 Colorado	29	0 Colorado	46	33 Wyoming	3	6 Colorado	33
0 Mines	27	0 Mines	51	0 Colorado	57	48 Wyoming	10
0 Wyoming	16	6 Wyoming	6	39	91	19 Denver	6
0	125	6	124	1910 (0-5-0)		13 Colorado College	24
1901 (1-3-0)		Coach: John McIntosh		Coach: Claude Rothgeb,		41 Utah State	7
Coach: C. J. Giffith		12 Denver	0	6 Mines	10	0 Mines	19
10 Colorado*	0	10 Mines	17	0 Denver	22	0 Oklahoma State	7
5 Denver	56	0 Colorado College	33	0 Colorado College	24	127	106
0 Colorado College	16	34 Wyoming	5	0 Colorado	44	1915 (7-0-0)	
0 Mines	11	0 Utah	24	0 Wyoming	10	Coach: Harry Hughes	
15	83	5 Denver	11	6	100	23 Colorado	6
*CU Forfeited		61	90	1911 (0-4-0)		21 Utah	9
1902 (1-3-2)		Coach: Claude J. Rothgeb		Coach: Harry Hughes		59 Utah State	0
Coach: C. J. Griffith		0 Mines	11	0 Denver	49	35 Mines	0
6 Colorado	11	4 Colorado College	0	0 Mines	27	48 Wyoming	0
0 Utah	0	0 Colorado	0	0 Colorado	31	24 Colorado College	13
24 Utah State	5	0	0	0 Wyoming	37	34 Denver	3
				144	244		31

FOR THOSE WHO CHOOSE THE FINEST

WICKMAN'S
FOR MEN, INC.

162 South College Avenue

Phone 482-2808



TRADE AT PHILLIPS 66
STATIONS IN LARIMER COUNTY

SERVICED BY SCHRADER OIL COMPANY

Box 495, Ft. Collins

482-1225

Open Monday and
Friday Nights till 9:00
For Your Shopping
Convenience

Complete Automotive
Center plus Paint,
Hardware & Sporting
Goods - 130 W. Olive

JCPenney
The values are here every day.

Main Store
215 So. College

Two Locations in
Downtown Fort Collins

All-time Scoreboard

1916 (6-0-1)
Coach: Harry Hughes

14	Colorado College	12
53	Utah State	0
21	Denver	13
40	Wyoming	0
0	Mines	0
12	Utah	6
32	Colorado	14
172		45

1917 (0-7-1)
Coach: Harry Hughes

0	Wyoming	6
20	Montana Aggies	20
6	Denver	10
12	Utah	25
7	Utah State	47
0	Colorado College	7
0	Mines	6
0	Colorado	6
45		127

1918 (0-2-0)
Coach: Harry Hughes

0	Denver	14
13	Colorado	16
13		30

1919 (7-1-0)
Coach: Harry Hughes

28	Wyoming	0
14	Wyoming	0
34	Utah	21
49	Colorado	7
33	Denver	3
27	Utah State	7
33	Mines	6
0	Colorado College	13
218		57

1920 (6-1-1)
Coach: Harry Hughes

0	Nebraska	7
42	Wyoming	0
27	Mines	0
21	Utah State	0
28	Colorado College	0
7	Colorado	7
14	Denver	0
13	Wyoming	0
152		14

1921 (2-2-1)
Coach: Harry Hughes

7	Wyoming	7
14	Mines	7
24	Colorado College	0
14	Denver	21
0	Colorado	10
59		45

1922 (5-2-1)
Coach: Harry Hughes

60	Wyoming	0
0	Colorado College	0
34	Utah State	6
0	Colorado	7
6	Drake	19
19	Mines	0
33	Brigham Young	0
27	Denver	6
179		38

1923 (5-2-1)
Coach: Harry Hughes

33	Wyoming	0
0	Chicago	10
14	Brigham Young	6
25	Denver	7
26	Utah State	0
14	Mines	0

3	Colorado	6
6	Colorado College	6
121		35

1924 (4-2-0)
Coach: Harry Hughes

17	Mines	0
17	Utah State	13
6	Colorado College	7
0	Colorado	36
22	CSCE	7
19	Denver	0
81		63

1925 (9-1-0)
Coach: Harry Hughes

34	Regis	0
21	Brigham Young	7
17	Denver	0
7	Colorado College	3
13	Utah State	0
43	CSCE	18
12	Colorado	0
41	Mines	10
40	Wyoming	0
0	Hawaii	41
228		79

1926 (6-2-1)
Coach: Harry Hughes

39	Regis	0
53	Mines	0
7	Denver	6
19	Colorado College	6
3	Colorado	0
19	Brigham Young	6
3	Arizona	3
6	Utah	10
0	Utah State	13
149		44

1927 (7-1-0)
Coach: Harry Hughes

33	CSCE	0
29	Brigham Young	0
0	Denver	6
12	Utah	0
6	Utah State	0
37	Mines	6
39	Colorado	7
20	Colorado College	7
176		26

1928 (6-2-0)
Coach: Harry Hughes

26	CSCE	6
15	Brigham Young	6
0	Utah	6
7	Utah State	6
7	Colorado	13
15	Denver	0
46	Mines	20
35	Colorado College	13
151		70

1929 (5-4-0)
Coach: Harry Hughes

14	Regis	0
20	Wyoming	7
13	Colorado College	14
12	Mines	0
0	Utah	21
46	Western State	14
7	Utah State	6
0	Colorado	6
6	Denver	19
118		87

1930 (3-5-1)
Coach: Harry Hughes

7	Regis	14
15	Denver	7
26	CSCE	0
0	Colorado	7

Village Inn

PANCAKE HOUSE RESTAURANT

Serving A Complete Menu

"SEE YOU AFTER THE GAME . . ."

1100 So. College

484-7058

THE Classic DEPARTMENT STORE

151 SOUTH COLLEGE AVENUE

PHONE: 484-6590

"The Home of Famous Brands"

STORE HOURS:

Daily from 9:00 to 5:30;

Monday and Friday till 8:30

USE YOUR CLASSIC AND MASTER CHARGE CARDS

All-time Scoreboard

0	Utah	39
6	Wyoming	21
13	Utah State	0
0	Colorado College	0
0	Arizona	16
67		104

1931 (5-4-0)

Coach: Harry Hughes		
6	Kansas	27
32	Colorado College	6
19	Colorado	6
6	Utah	60
26	Wyoming	6
0	Utah State	6
20	Denver	0
21	CSCE	7
7	Nebraska	20
137		138

1932 (4-3-1)

Coach: Harry Hughes		
12	CSCE	0
39	Mines	0
7	Denver	7
7	Colorado	6
0	Colorado College	3
12	Utah State	13
0	Utah	16
23	Wyoming	0
100		45

1933 (5-1-1)

Coach: Harry Hughes		
7	Wyoming	0
0	Denver	0
19	Colorado	6
19	Mines	0
3	Utah State	0
30	Colorado College	7
0	Utah	13
78		26

1934 (6-2-1)

Coach: Harry Hughes		
12	CSCE	0
3	Arizona	7
2	Denver	0
56	Mines	0
9	Colorado	27
16	Wyoming	0
21	Utah State	21
14	Utah	6
40	Colorado College	6
173		67

1935 (3-4-1)

Coach: Harry Hughes		
12	Wyoming	3
14	Denver	20
19	Mines	0
6	Colorado	19
0	Utah State	13
0	Utah	14
0	Colorado College	0
7	New Mexico	6
58		75

1936 (4-4-1)

Coach: Harry Hughes		
13	Western State	0
9	New Mexico	7
0	Wyoming	0
7	Colorado	9
0	Utah State	13
12	CSCE	6
19	Colorado College	12
0	Utah	13
7	Denver	14
67		74

1937 (1-7-0)

Coach: Harry Hughes		
0	Mines	7
0	Denver	22

0	Wyoming	7
0	Colorado	47
0	Utah State	7
0	Utah	45
6	Colorado College	0
0	Arizona	47
6		182

1938 (1-5-2)

Coach: Harry Hughes		
12	Mines	6
0	Wyoming	0
0	Denver	0
6	Colorado	31
0	Utah State	6
0	Utah	13
12	Brigham Young	20
7	New Mexico	27
37		103

1939 (2-7-0)

Coach: Harry Hughes		
14	Mines	19
12	Brigham Young	13
0	Kansas	7
0	Colorado	13
9	Utah State	0
22	Wyoming	0
6	Denver	13
7	Utah	42
19	New Mexico	21
89		128

1940 (3-4-2)

Coach: Harry Hughes		
25	Mines	0
0	Wyoming	0
13	Denver	14
14	Colorado	33
7	New Mexico	6
13	Utah State	12

0	Utah	27
13	Brigham Young	13
0	Kansas	26
85		131

1941 (4-2-1)

Coach: Harry Hughes		
21	Mines	6
27	Wyoming	0
13	Colorado	26
7	Utah State	6
6	Denver	6
0	Utah	26
22	Brigham Young	7
109		77

1942 (3-4-0)

Coach: Julius (Hans) Wagner		
10	Wyoming	0
27	Mines	0
0	Denver	26
7	Colorado	34
25	Utah State	0
14	Utah	33
12	Brigham Young	20
95		113

1943 (no games played)

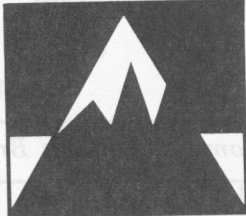
1944 (no games played)

1945 (2-5-1)

Coach: Julius (Hans) Wagner		
7	Colorado College	7
12	Denver	35
6	Colorado	21
0	Utah State	13
25	CSCE	14
33	CSCE	0
6	Fort Warren	61
0	Utah	28
89		179

FOR FIRST CLASS SPORTS ACTION
SEE THE BATTLING RAMS!

**HOME
FEDERAL**



**SAVINGS
OF THE ROCKIES**

TWO CONVENIENT LOCATIONS

Oak at Howes

482-3216

College at Drake

493-1234

MANUFACTURERS OF AMERICAS FINEST AWARDS

Empire

Ribbon & Trophy Company

2440 Hiway 287 West

Fort Collins, Colorado

484-2267

McDonald's



© McDONALD'S CORPORATION, 1968

**100% Beef Hamburgers
Crisp Golden French Fries
Triple-Thick Shakes**

McDonald's is your kind of place.

2501 S. College



All-time Scoreboard

1946 (2-7-0)
Coach: Julius (Hans) Wagner

25 Fort Warren	0
0 Montana	27
7 Wyoming	0
0 Denver	33
0 Utah State	47
12 Colorado College	25
0 Utah	13
6 Brigham Young	20
0 Colorado	18
50	183

1947 (5-4-1)
Coach: Bob Davis

20 Mines	12
23 Drake	19
13 Utah State	26
13 Denver	13
28 Colorado College	7
7 Colorado	14
0 Utah	19
27 Brigham Young	25
21 Wyoming	6
7 Montana	41
159	182

1948 (7-4-0)
Coach: Bob Davis

25 Colorado College	6
6 New Mexico State	41
9 Utah State	7
14 Denver	10
21 Wyoming	20
29 Drake	31
33 Mines	0
3 Utah	12
20 Brigham Young	0
29 Colorado	25
20 Occidental	21
(Raisin Bowl Game)	
244	138

1949 (9-1-0)
Coach: Bob Davis

14 Colorado College	7
14 Denver	13
0 Wyoming	8
177	137

27 Montana	12
27 Mines	7
28 Utah State	6
21 Utah	12
16 Brigham Young	14
45 New Mexico State	0
14 Colorado	7
206	86

1950 (6-3-0)
Coach: Bob Davis

30 Denver	14
48 Colorado College	7
0 Wyoming	34
27 Brigham Young	14
33 Utah State	13
26 Mines	0
32 Utah	7
13 Arizona State	21
6 Colorado	31
215	141

1951 (5-4-1)
Coach: Bob Davis

13 Colorado	28
41 Mines	0
54 Colorado College	13
14 Wyoming	7
20 Utah State	20
20 New Mexico	15
19 Brigham Young	21
34 Montana	6
21 Utah	27
6 Denver	21
242	158

1952 (6-4-0)
Coach: Bob Davis

26 Mines	0
14 Arizona State	40
28 Denver	6
14 Wyoming	0
41 Montana	0
21 Utah State	7
6 Utah	14
0 New Mexico	3
27 Brigham Young	6
0 Colorado	61
177	137

1953 (4-5-0)
Coach: Bob Davis

14 Kansas State	13
21 Denver	6
14 Wyoming	21
31 Montana	32
13 Utah State	14
34 Brigham Young	12
14 Utah	35
9 New Mexico	3
7 Colorado	13
157	149

1954 (3-7-0)
Coach: Bob Davis

0 Kansas State	29
0 Colorado	46
14 Brigham Young	13
0 Wyoming	34
7 College of Pacific	15
14 Utah State	20
37 Montana	34
14 Utah	13
7 New Mexico	10
0 Denver	34
93	248

1955 (8-2-0)
Coach: Bob Davis

7 Arizona	20
25 New Mexico	0
20 Denver	19
14 Wyoming	13
26 Utah State	9
12 Montana	7
20 Oklahoma State	13
6 Utah	27
35 Brigham Young	0
10 Colorado	0
175	108

1956 (2-7-1)
Coach: Don (Tuffy) Mullison

14 College of Pacific	39
0 Brigham Young	0
12 Wyoming	20
7 Colorado	47
7 Utah State	46
34 Montana	20
14 Xavier	27
123	147

27 Utah	49
13 Denver	39
28 New Mexico	27
156	314

1957 (3-7-0)
Coach: Don (Tuffy) Mullison

7 New Mexico	30
27 Denver	6
13 Wyoming	27
0 Bradley	19
14 Utah State	27
0 Utah	55
0 Colorado	20
19 Montana	7
9 Brigham Young	26
20 Air Force Academy	7
109	224

1958 (6-4-0)
Coach: Don (Tuffy) Mullison

21 Drake	0
32 Brigham Young	6
6 Air Force Academy	36
6 Wyoming	7
0 Utah State	15
57 Montana	7
20 Utah	0
12 New Mexico	17
15 Colorado	14
9 Denver	8
178	110

1959 (6-4-0)
Coach: Don (Tuffy) Mullison

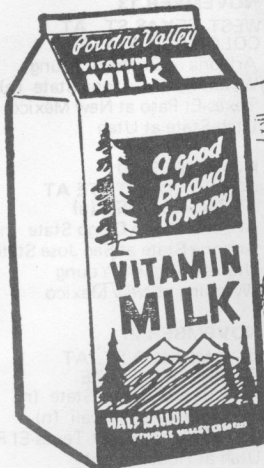
9 College of Pacific	6
14 New Mexico	9
15 Denver	0
0 Wyoming	29
9 Arizona State	24
6 Army	25
26 Montana	16
10 Utah State	7
21 Utah	17
13 Brigham Young	14
123	147

1960 (2-8-0)
Coach: Don (Tuffy) Mullison

0 Arizona State	39
8 Air Force Academy	32

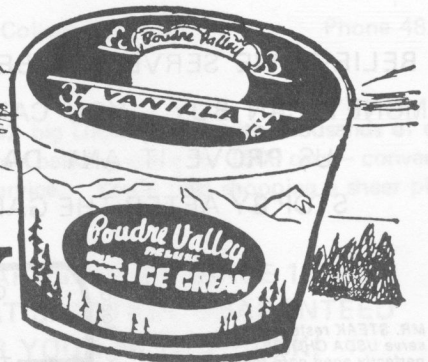
mountain fresh!

morning fresh!



POUDRE VALLEY

QUALITY DAIRY FOODS



All-time Scoreboard

8	Brigham Young	7
30	Drake	3
0	Utah State	21
14	Montana	26
6	Utah	27
6	New Mexico	24
12	Denver	21
92		240

1961 (0-10-0)

Coach: Don (Tuffy) Mullison

0	Utah	40
6	Arizona	28
6	Arizona State	14
0	San Jose State	14
7	Wyoming	18
3	Utah State	49
19	Montana	22
9	Air Force Academy	14
16	Brigham Young	30
8	New Mexico	20
74		249

1962 (0-10-0)

Coach: Mike Lude

0	Air Force Academy	34
0	Arizona State	35
7	Brigham Young	28
7	UCLA	35
0	Utah State	21
7	Wyoming	28
8	Utah	26
8	New Mexico	21
14	Oregon State	25
15	Montana	16
66		269

1963 (3-7-0)

Coach: Mike Lude

20	University of Pacific	0
0	Air Force Academy	69
7	Arizona State	50
3	Wyoming	21
14	Utah	48
21	Texas Western	14
0	New Mexico	25
111		199

1965 (4-6-0)

Coach: Mike Lude

13	Utah State	36
20	Montana	12
20	Brigham Young	24
118		299

1964 (5-6-0)

Coach: Mike Lude

7	Wyoming	31
7	University of Pacific	0
6	Air Force Academy	14
7	Brigham Young	6
3	Utah	13
13	Utah State	42
6	Arizona State	34
14	San Jose State	3
0	New Mexico	42
35	Texas Western	8
13	Hawaii	6
111		199

1966 (7-3)

Coach: Mike Lude

45	South Dakota State	14
24	Brigham Young	27
6	Tulsa	20
10	Utah State	7
41	Air Force Academy	21
12	Wyoming	10
45	New Mexico	6
264		264



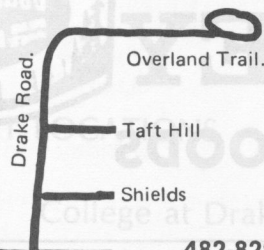
MR. STEAK

ALL AMERICAN



ALL THE BEEF ISN'T ON THE FOOTBALL FIELD

WE BELIEVE WE SERVE THE BEST STEAK*
MONEY CAN BUY. YOU CAN MAKE
US PROVE IT ANY DAY
STOP BY AFTER THE GAME



* MR. STEAK restaurants serve USDA CHOICE perfectly aged corn-fed beef exclusively cooked to order.

2712 S. College 482-8290

Banquet Facilities Available

WAC Composite Schedule

SEPTEMBER 10

Brigham Young at North Texas State (n)

SEPTEMBER 11

Texas-Arlington at Texas-El Paso (n)
South Dakota at Wyoming

SEPTEMBER 18

COLORADO STATE AT BYU (n)
Arizona at Washington State
Houston at Arizona State (n)
New Mexico at Texas Tech (n)
Pacific at Texas-El Paso (n)
Utah at Oregon (n)
Wyoming at Colorado

SEPTEMBER 25

COLORADO STATE AT IDAHO (n)
Arizona at Texas-El Paso (n)
Arizona State at Utah
Brigham Young at Kansas State
Iowa State at New Mexico (n)
Wyoming at Air Force

OCTOBER 1

New Mexico at Brigham Young (n)

OCTOBER 2

COLORADO STATE AT WYOMING (TV)
Texas Tech at Arizona (TV)
Texas-El Paso at Arizona State (n)
Washington State at Utah

OCTOBER 9

ARIZONA ST. AT COLORADO STATE
Arizona at Wyoming
Brigham Young at Utah State
New Mexico State at New Mexico (n)
Utah at Texas-El Paso (n)

OCTOBER 16

COLORADO STATE AT UTAH
UCLA at Arizona (n)
Arizona State at Oregon State (n)
Brigham Young at Wyoming
New Mexico at San Jose State (n)
Texas-El Paso at New Mexico State (n)

OCTOBER 23

AIR FORCE AT COLORADO STATE
Utah at Arizona (n)
Arizona State at New Mexico
Brigham Young at Tulsa
Texas-El Paso at Wyoming

OCTOBER 30

UTAH STATE AT COLORADO STATE
New Mexico at Arizona
Air Force at Arizona State (n)
Brigham Young at Texas-El Paso (n)
Wyoming at Utah

NOVEMBER 6

COLORADO STATE AT WICHITA STATE
Oregon State at Arizona (n)
Brigham Young at Arizona State (n)
Utah at New Mexico
Wyoming at Utah State

NOVEMBER 13

WEST TEXAS ST. AT COLORADO STATE
Arizona at Brigham Young
Wyoming at Arizona State (n)
Texas-El Paso at New Mexico
Utah State at Utah

NOVEMBER 20

COLORADO STATE AT TEXAS-EL PASO (n)
Arizona at San Diego State (n)
Arizona State at San Jose State (n)
Utah at Brigham Young
Wyoming at New Mexico

NOVEMBER 27

NEW MEXICO ST. AT COLORADO STATE
Arizona at Arizona State (n)
New Mexico at Hawaii (n)
Long Beach State at Texas-El Paso
Utah at Houston (n) (n)

All-time Scoreboard

35 West Texas State	26	1969 (4-6)	
23 Wichita State	37	Coach: Mike Lude	
34 Iowa State	10	20 Brigham Young	22
275	178	50 Wichita State	21
1967 (4-5-1)		3 Wyoming	39
Coach: Mike Lude		37 Utah State	33
7 Kansas State	17	27 West Texas State	7
10 Wyoming	13	7 Air Force Academy	28
14 West Texas State	24	16 Texas-El Paso	17
10 North Texas State	21	31 Idaho	21
17 Utah State	14	7 Airzona State	79
17 Air Force Academy	17	20 New Mexico State	21
24 Univ. of Pacific	15	218	288
0 U. of Texas-El Paso	17	1970 (4-7)	
77 Kansas State College	0	Coach: Jerry Wampfler	
43 Wichita State	11	28 New Mexico State	9
219	149	9 Arizona State	38
1968 (2-8)		6 Iowa State	37
Coach: Mike Lude		22 Air Force	37
21 New Mexico	13	6 Wyoming	16
0 Kansas St. U.	21	37 Texas-El Paso	41
12 N. Texas State	17	21 West Virginia	24
13 Texas Tech	43	20 Utah State	13
37 Wichita State	15	26 Brigham Young	9
0 Air Force Academy	31	17 Pacific	8
0 Pacific U.	31	14 Toledo	24
14 Wyoming	46		
17 West Texas State	22		
19 U. of Texas-El Paso	23		
133	262		

1971 Frosh Schedule

Date	Opponent	Site	Time
Oct. 15	Air Force Academy Freshmen	AFA, Colo.	7:00 p.m. (MDT)
Oct. 22	Air Force Academy Prep	AFA, Colo.	3:00 p.m. (MDT)
Oct. 29	Mesa Junior College	Ft. Collins	1:30 p.m. (MDT)
Nov. 12	Wyoming University	Ft. Collins	1:30 p.m. (MDT)



150 South College

THE SMARTEST WEARING APPAREL FOR MEN
IN FORT COLLINS

**B
A
K
E
'
S**



**RESTAURANT
AND LOUNGE**

249 SOUTH COLLEGE

**EMPIRE
HOTEL**

261 South College



Northern Colorado's
Finest Hotel

**MONTGOMERY
WARD**

CENTURY MALL

2201 South College

Phone 482-1110

Offers you 42 big Departments with thousands of quality items — roomy parking space for 1500 cars — convenient 6 stall Auto Service. You'll find shopping a sheer pleasure.

**WARDS POLICY SINCE 1872 . . .
SATISFACTION GUARANTEED
OR YOUR MONEY BACK!**

Back in 1872, Wards pioneered what was then a "Revolutionary" concept of "Customer satisfaction or money back." A lot of things have changed since then, but not our guarantee.

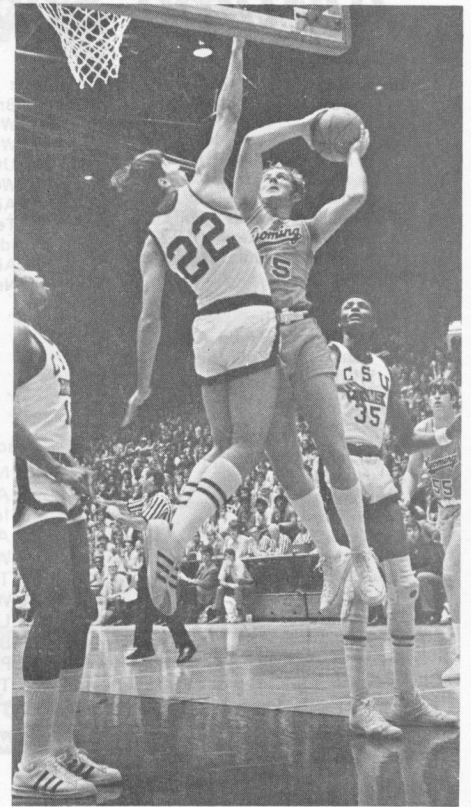
For a Full Account
of all the
Games read the
Daily and Sunday Sports Pages
of the

**FORT COLLINS
COLORADOAN**

*"A Newspaper
for the Home"*

**RAMS'
1971
Basketball
Action**

13 EXCITING
HOME GAMES
WITH A FULL
WESTERN
ATHLETIC
CONFERENCE
SCHEDULE



Gary Rhoades

**Be in
the know**

Order the

**Official NCAA
Football Guide**

Containing . . .

- Schedules of more than 400 teams
- Sectional previews by prominent writers
- 1970 statistics and scores
- Read-easy rules
- Bowl game review

\$2.00

Send check or
money order to:

**NCAA
349 East Thomas Road
Phoenix, Arizona 85012**

Date	Opponent	Location	Time
DEC. 1	DENVER UNIVERSITY	FORT COLLINS	7:30 p.m.
DEC. 3	CALIFORNIA-FULLERTON	FORT COLLINS	7:30 p.m.
DEC. 11	AIR FORCE ACADEMY	FORT COLLINS	7:30 p.m.
Dec. 17-18	Volunteer Classic (Penn State, Mich. State, Tenn. CSU)	Knoxville, Tenn.	7:00 p.m.
DEC. 21	TEXAS CHRISTIAN U.	FORT COLLINS	7:30 p.m.
DEC. 22	KENT STATE U.	FORT COLLINS	7:30 p.m.
DEC. 30	UTAH STATE U.	FORT COLLINS	7:30 p.m.
JAN. 7	NEW MEXICO U. *	FORT COLLINS	7:30 p.m.
JAN. 8	TEXAS-EL PASO *	FORT COLLINS	7:30 p.m.
Jan 14	Arizona University *	Tucson, Arizona	7:30 p.m.
Jan 15	Arizona State University*	Tempe, Arizona	8:05 p.m.
Jan 18	Denver University	Denver, Colorado	8:00 p.m.
Jan 22	WYOMING UNIVERSITY*(TV)	Laramie, Wyoming	1:40 p.m.
JAN 27	BIGHAM YOUNG U. *	FORT COLLINS	7:30 p.m.
JAN 29	UTAH UNIVERSITY (TV) *	FORT COLLINS	3:40 p.m.
Feb. 5	Wyoming University *	FORT COLLINS	7:30 p.m.
Feb. 10	Texas-El Paso *	El Paso, Texas	7:30 p.m.
Feb. 12	New Mexico U. *	Albuquerque, N. M.	7:30 p.m.
FEB. 18	ARIZONA STATE U. *	FORT COLLINS	7:30 p.m.
FEB. 19	ARIZONA UNIVERSITY *	FORT COLLINS	7:30 p.m.
Feb. 25	Utah University *	Salt Lake City, U.	7:30 p.m.
Feb. 26	Brigham Young University *	Provo, Utah	7:30 p.m.
Feb. 28	Utah State University	Logan, Utah	7:30 p.m.

* Western Athletic Conference Games
Home games in all caps

FOR TICKET INFORMATION CONTACT:

Athletic Ticket Office
CSU Athletic Department
Fort Collins, Colorado 80521
491-5379

Know The Foe

Air Force Academy



Lt. Gen. Albert P. Clark
Superintendent

THIS IS THE ACADEMY

Location: Approximately 10 miles north of Colorado Springs, Colorado, at the base of the Rampart Range of the Rocky Mountains. The Academy site covers 18,000 acres.

Enrollment: 4,100 (approximate). Public Law 88-276 was signed by the President on 3 March 1964 authorizing an increase in strength of the Cadet Wing from 2,529 to 4,417.

Founded: Authorized 1 April 1954. The first class was received 11 July 1955. The first class was graduated in June 1959.

Colors: Silver and Blue

Nickname: Falcons

Mascot: Falcon (Mach I)

Curriculum: The U.S. Air Force Academy is neither an engineering nor a liberal arts college, but combines certain elements of both. It may be accurately described as a school of general education for professional Air Force Officers—a school which endeavors to give each cadet the knowledge and qualities of leadership required of an officer in the United States Air Force and a basis for continued development throughout a lifetime of service to his country, leading to readiness for responsibilities as a future air commander. A cadet who completes the 4-year course will graduate with a Bachelor of Science degree and a commission as a second lieutenant in the Regular Air Force.



Falcon Stadium seats 45,000 and is located only a short distance from Interstate 25 on the grounds of the US Air Force Academy.



Col. Frank Merritt
Director of Athletics

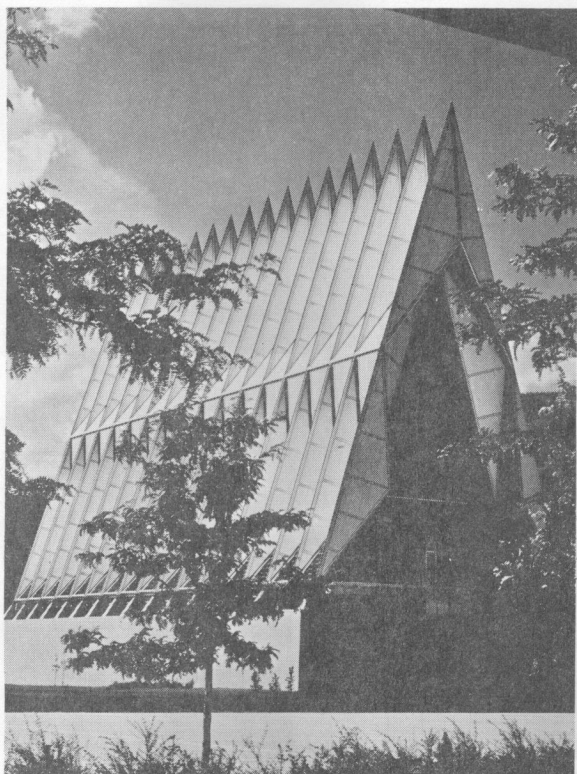


Ben Martin
Head Coach

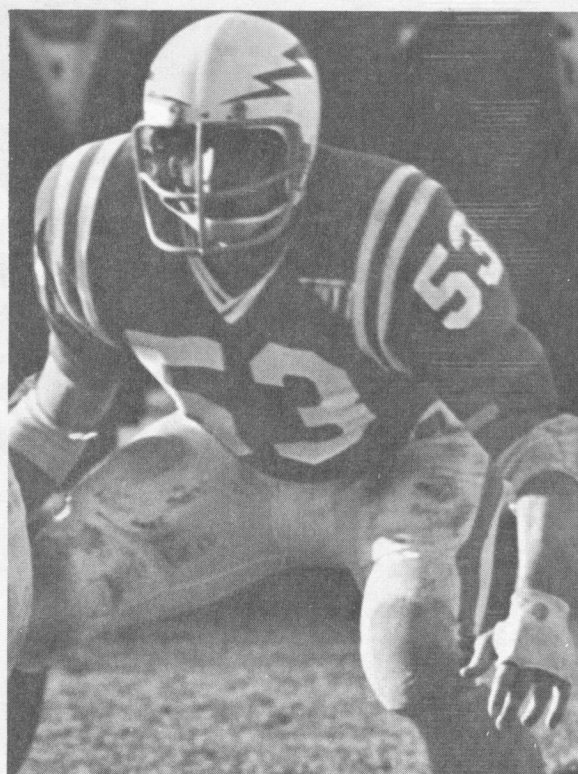
AFA Coaching Staff



KNEELING: (Left to Right) Leland Kendall, defensive line coach; Nick Liontas, receivers coach; Ben Martin, head coach; Bernard (Bernie) Raetz, offensive backfield coach; and Carlton (Skinner) Simpson, head junior varsity coach.
STANDING: (Left to Right) Lawrence (Butch) Metcalf, offensive line coach; Jack Braley, defensive backfield coach; John Carney, linebackers coach; Jim Bowman, head freshman coach; and Eldon (Spike) Hillstrom, offensive line coach.

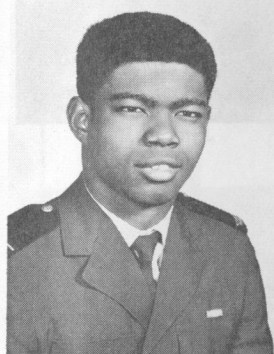


The Air Force Academy Cadet Chapel is the multi-faith center for the moral and spiritual life of Academy cadets.



Darryl Haas, middle linebacker for the Academy, will be the defensive leader for the cadets in today's game.

Air Force Falcons



Paul Bassa



Kent Bays



Kevin Brennan



John Greenlaw



John Griffith



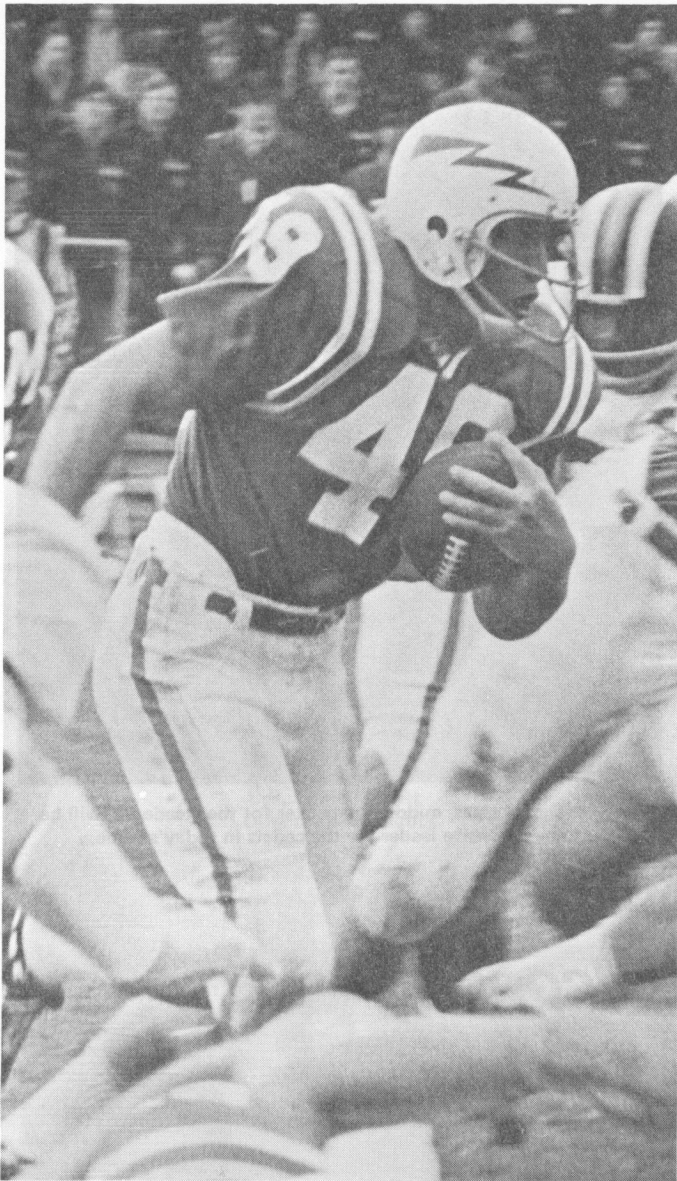
Steve Hansen



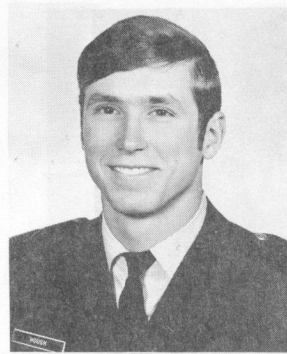
Rich Haynie



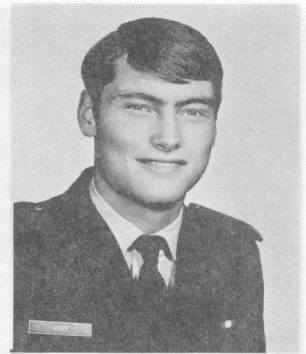
Gordon Herrick



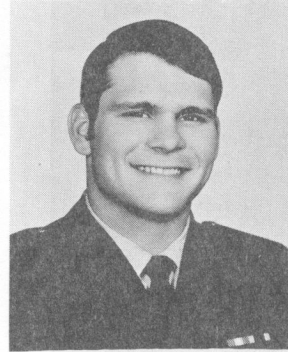
Air Force's All-American candidate Brian Bream has carried for 334 yards this year.



Chip Hough



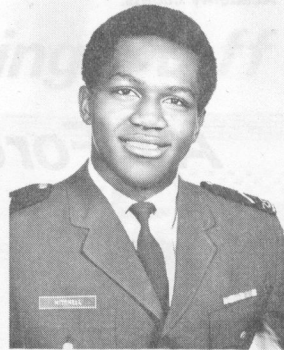
Larry Huff



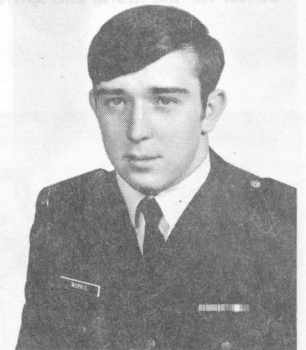
Jim Janulis



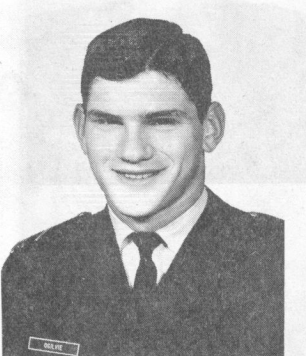
Willie Mayfield



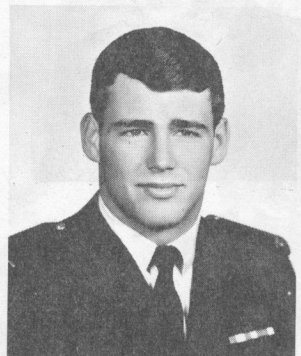
Orderia Mitchell



Jim Morris



Gene Ogilvie



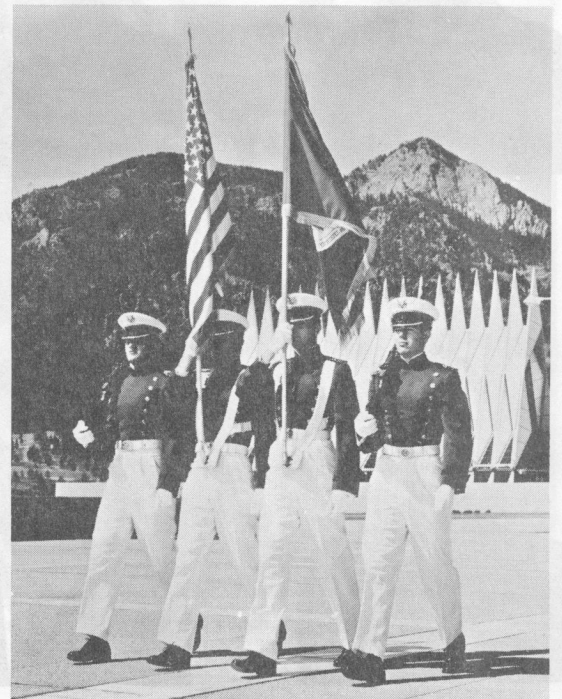
Charlie Richardson



Greg Smith



Steve Waller



An Air Force Academy cadet color guard marches on the terrazzo in a June Week parade.



BREWED WITH PURE
ROCKY MOUNTAIN SPRING WATER.®

Compliments of:

E & J COMPANY, INC.

**518 North Loomis Ave.
Fort Collins**

YOUR AREA DISTRIBUTOR FOR COORS

Coors

AMERICA'S FINE LIGHT BEER.®

ADOLPH COORS COMPANY, GOLDEN, COLORADO



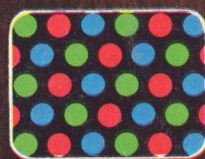
The Peale, Model C3722W
Simulated TV Picture

Zenith
introduces
a portable that
...outcolors
...outbrightens
...outdetails, and
...outperforms
every other
color TV
its size.

Now famous Zenith Chromacolor comes in a new 16-inch (diagonal) portable that goes anywhere in the house.

Its totally advanced Chromacolor system features Zenith's dependable Handcrafted chassis and patented Chromacolor picture tube—the first tube to fully illuminate every color dot on a jet-black background. To bring you a color picture so good, you really have to see it, to see why it's become the standard of excellence.

Visit a Zenith dealer and see Zenith's new 16-inch (diagonal) portable. Newest member of the Chromacolor family of screen sizes. At Zenith, *the quality goes in before the name goes on.*[®]



ZENITH[®] PORTABLE
CHROMACOLOR[®]

ONLY ZENITH HAS IT